

Auction

Tuesday 17th April 2018

Kidson
Trigg

Estate Agents, Chartered Surveyors & Auctioneers

To include:

- Residual House Clearance from the recent sale of Faringdon House, Oxfordshire



- Specialist Section of Books, Vintage, Sporting items
- Ceramics, Glass, Jewellery, Objet d'Arts, Pictures, Furniture, Rugs, Home Furnishings

This April Auction offers a wide spectrum of items from local house clearances & probates and the residual house clearance of items from Faringdon House.

Vintage clothing, accessories, sporting items, as well as the usual variety of jewellery, furniture, pictures, china, rugs, home furnishings and decorative items.



Faringdon House, Oxfordshire, which has recently sold, was the home of the infamous Lord Berners, composer, writer, painter and renowned for his eccentricity and homosexuality. He made Faringdon House the centre of a glittering social circle, entertaining some of the most diverse, creative and influential people during the 1920s & 30s. The weekend visitors book of guests included Evelyn Waugh, Siegfried Sassoon, John Betjeman, The Mitford Sisters, Salvador Dali, Aldous Huxley, HG Wells, Gertrude Stein, Edith Sitwell, The Marchesa Casati. Berners companion was Robert Heber-Percy "Mad Boy" for whom he built Faringdon Folly for his 21st Birthday. Robert went on to inherit the estate, and is grandfather to the vendor of items in the auction.

One of the most interesting lots in the sale is Lot 759 "The Red Bed" from the "Red Bedroom" which Nancy Mitford (writer of *The Pursuit of Love*, *Love in a Cold Climate*) famously wrote about in the 1950s *House and Gardens Magazine*. Salvador Dali and his wife Gala regular stayed in the Red room. Photographed is his signature in the Faringdon house Guest book. There is a wide range of lots, from the contemporary kitchen island unit (lot 746), to the stair-rods from the impressive hall double stairwell, to the library clearance (Lots 1-30), to Robert Heber-Percys red hunt evening tail coat (Lot 207), to the chandelier (Lot 738) which has hung over the front porch, overlooking the fantastical characters from a vanished world of Faringdon House from the last century.

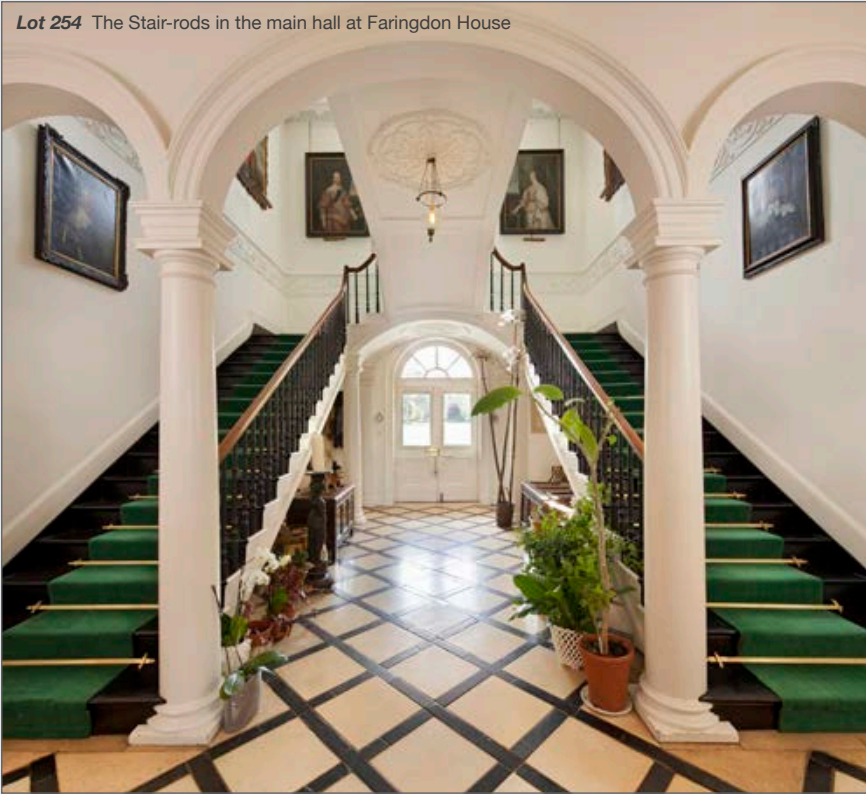
“

I can remember during the tedious or frightening but always sleepless nights of fire-watching in wartime London, that the place I longed to be in most intensely was the red bedroom at Faringdon, with its crackling fire, its Bessarabian carpet with bunchy flowers and above all its four-post bed, whence from beneath a huge fat fluffy old-fashioned quilt one can gaze out at the view, head still on pillow....

Nancy Mitford, *House & Gardens Magazine* 1950s, taken from the Book by the Vendor Sofka Zinovieff, "The Mad Boy, Lord Berners, My Grandmother and Me"

”

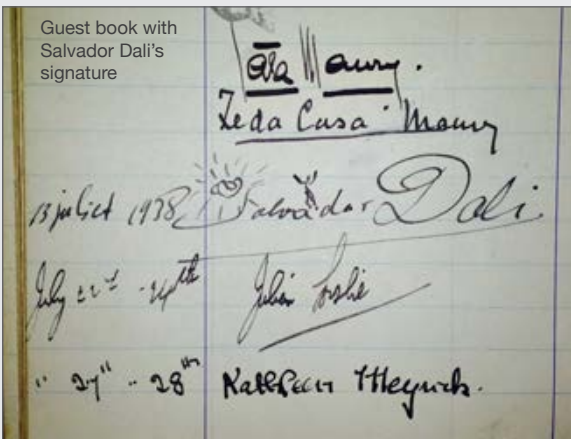
Lot 254 The Stair-roads in the main hall at Faringdon House



Lot 398
Wine from
the cellar



Guest book with
Salvador Dali's
signature



Lot 738
The Chandelier
over the front porch

the MAD BOY, LORD BERNERS, MY GRANDMOTHER AND ME

Lot 266 (part of)
Vendors Book
about Faringdon
House in the
last C20th

Sofka Zinovieff

"downable and gloriously lavish; there is something
fascinating to gaze at on every page" Observer

Lot 217
Faringdon House Estate Signs



Sale Information

ALL ABSENTEE PAYMENTS: by BANK transfer please

APPROXIMATE TIMINGS:

(please mind the gaps)

TUESDAY 17TH APRIL

- 10.00am** Lots 1-38: Books
10.20am Lots 101-167: Ceramics, Glass etc
10.50am Lots 201-291: Large Collectables etc
11.30am Lots 297-401: Silver, Jewellery, Small Collectables etc
12.30pm Lots 464-568: Sporting items, Vintage Clothing & Accessories
1.30pm Lots 569-645: Pictures
2.15pm Lots 647-700: Rugs
2.30pm Lots 701-860: Furniture

Approx End 4.15pm

VIEWING:

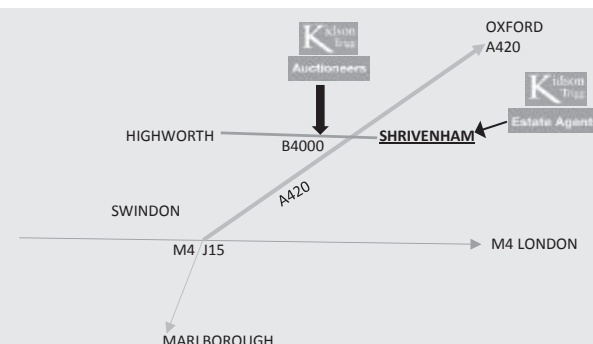
- Friday 13th April 1.00pm - 6.00pm
Sunday 15th April 9.00am - 1.00pm
Monday 16th April 10.00am - 6.00pm
Tuesday 17th April from 8.30am

ENQUIRIES:

01793 861000 auctions@kidsontrigg.co.uk
www.kidsontrigg.co.uk

The Kidson-Trigg Auction Rooms & Friars Estate Office

Highworth, Swindon, Wiltshire SN6 7PZ
On the B4000 midway Shrivenham and Highworth



SALE INFORMATION:

COMMISSION/absentee bids can only be accepted by email (not by telephone) or via our homepage on our website, click "Leave us a bid" - there is no charge for this. The Auctioneers will gladly undertake absentee bids in confidence on behalf of those persons unable to attend the sale. All commission bids must be submitted **before 6 pm on the evening prior to the sale. Please telephone the office by Thursday evening at the latest for your results.**

TELEPHONE BIDS can only be accepted by email (not by telephone) Operates on certain lots only, and are at the discretion of the auctioneer, and must be agreed with the Auctioneers **before 6pm on the evening prior to the sale.**

CLEARANCE Porters are available on sale day and the day after to assist with goods. Purchasers must provide adequate assistance at other times and at all times for the removal of heavy and difficult objects. Please enquire at the office for transport companies.

MEASUREMENTS ARE IN CENTIMETRES unless otherwise stated

KEY TO TERMS: a/f = the lot is in the condition "as found" F&G = Framed & Glazed

BUYERS PREMIUM IS 20% PLUS VAT (= 24%)

ONLINE BIDDING is via www.the-saleroom.com/kidsontrigg (3% + vat)

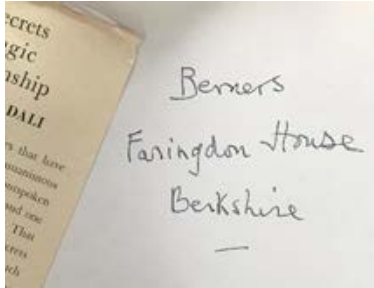


Clearing the Old Chapel and Library at Faringdon House

BOOKS:

Provenance:

Faringdon House Library clearance

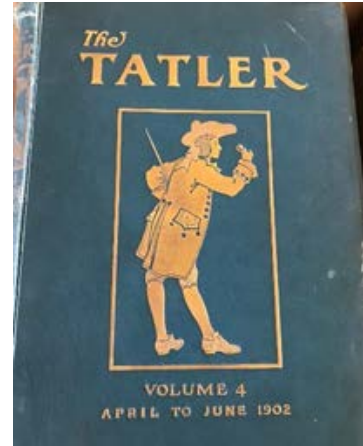


- 1 Qty of various books relating to art and antiques and various "coffee table" books etc, **ESTIMATE:** 50-100



- 2 Qty of various books relating to **children's titles**, including The Golliwogg's Christmas, The Girls Own Annual etc, 50-100
- 3 Qty of various books relating to Racing & Field Sports, incl Racing calendar 1800s, Baileys Hunting Directory, General Stud Book etc, 50-100
- 4 Qty of various books relating to Medical, Natural History & Geography, some leather bound, etc, 50-100
- 5 Qty of various books 50-100
- 6 Qty of various books relating to Music etc 50-100
- 7 Qty of various books relating to Russia and Russian interest etc, 50-100
- 8 Qty of various books relating to Literature & Poetry, Theatre etc, many old leather bound, etc, 50-100
- 9 Qty of books, 26 Volumes of Royal Academy Pictures early 1900s, 50-100
- 10 Qty of various books with tooled /and leather bindings 50-100
- 11 Qty of various "coffee table" books relating to many wide subject matters, including hard back books of art, animals, travel etc. 50-100
- 12 Qty of various travel related pamphlets maps and guides etc 50-100
- 13 Qty of general books, leather bound and others 50-100
- 14 Qty of various books relating to Art and antiques etc, 50-100

- 15 Qty of various books and antiques auction catalogues, including Christie's Reviews etc, 50-100



- 16 **Qty of various volumes of old Country Life (1897-8), & The Tatler (early 1900s) etc, 50-100**
- 17 Qty of C17-C19th old leather and other bound books including Quarterly Review, History related etc, 50-100
- 18 Qty of various books, incl. The Tour of Doctor Syntax to the Lakes, Arabic Holy Book & History of Europe 1794 100-150
- 19 Qty of various books including bound volumes of Debretts, Burks Peerage etc, 50-100



- 20 **Old Faringdon Newspapers 1890s, "The Faringdon Advertiser & Vale of the White Horse Gazette" 50-100**
- 21 William Withering 'An Arrangement of British Plants' 7th edition, four volumes, published London 1830, leather & cloth boards 80-120
- 22 Reginald Heber 'Narrative of a Journey through Upper Provinces of India, 4th edition, three volumes, published London 1928 and The Old Skerry 'The Hunting Grounds of the Old World' 2nd edition, London 1860 (4) 200-250
- 23 Francis Grose 'The Antiquities of England and Wales' four volumes, 1773 green leather and marble boards 100-150
- 24 One volume 'Old England, a Pictorial Museum', Volume 2, published 1854, two volumes 'Lewis's Topographical Dictionary, One volume 'Haydn's Dictionary of Dates' published 1881 and seven volumes 'History of England' by Macaulay, 1858 80-120
- 25 Dr Goldsmith 'History of(Rome, Greece and England)', six volumes, and four volumes 'The Works of Lucian' by Thomas Franklin, London 1781 and assorted leather bindings 80-120
- 26 Austen Layard, 2 vols 'Nineveh and its Remains, visit to the Chaldean Christians of Kurdistan.....' and Arts of Ancient Syrians, published John Murray 1850 and 2 vols 'Visits to Remarkable Places' by William Howitt, London 1840 60-100
- 27 William Falkner 'Libertas Ecclesiastica or Disclosure' published London 1674, one volume Jerusalem Delivered by John Hook, London 1811 50-70
- 28 William Pogany 'Parsifal or Legend of the Holy Grail' published by Harrap & Co 100-150

- 29 Six volumes 'Philosophical and Political History of the Settlements and Trade of the Europeans in the West Indies', 2nd edition, London 1768 100-200
- 30 William Robertson 'The History of Scotland' three volumes, 1802, two volumes 'Memoirs of Baron de Tott containing the State of the Turkish Empire....' published 1786, one volume 'The New Duty of Man', Dublin 1752, two volumes 'Stanhope on Wisdom' 1697, and twenty two volumes 'Cooke's Pocket Edition of the History of England' by Smollett 50-100



- 31 Eight volumes 'Theatre de P. Corneille' new edition published Geneva 1774 and six further theatre/opera titles 200-300
- 32 One volume 'Humming Birds', two similar titles, one volume 'Excursions in Kent, Gloucestershire, Herefordshire, Monmouthshire and Somersetshire' by J P Morgan, London 1807 and assorted other titles 60-100
- 33 Musical score 'Berceuse et Reve d'Enfant' by Rudolphe Willmers dedicated to Her Majesty Elisabeth, Imperatrice d'Autriche, Reine de Hongrie, with gilt metal heraldic crest 50-80
- 34 One volume 'Un Siecle de Modes Feminines' with numerous illustrations, one volume 'The Natural Philosophy 'Mechanics'', one volume 'A Million of Facts' one volume 'Hints on Etiquette' 30-60



- 35 Vice Admiral Vernon 'A New History of Jamaica from the earliest accounts to the taking of Porto Bello', 2nd edition published J Hodges London 1740, with two maps, original gilt tooled leather binding. NB split on spine 200-300
- 36 Six volumes 'Old and New London' published Cassell & Co Ltd, four volumes 'History of England', and four similar volumes 60-80

- 37 Three volumes 'Our National Cathedrals embossed red cloth boards, Frederick Whymper 'The Heroes of the Arctic, 7th edition 1889, Henry Savage-Lander 'Across Coveted Lands' Vol 2, Algernon Heber Percy 'A Visit to Bashan and Argob' 1895, Reverend Hutchinson 'Marriage Customs in Many Lands', two other titles, Philips Comprehensive Atlas 1894 and one volume 'Conquests of The Cross' missionary work throughout the world, 1890 and assorted titles 70-120
- 38 Rudyard Kipling - 13 volumes 'The Works' (service edition) 3 volumes 'Boys Own Annual', assorted encyclopaediam, Charles Dickens Victoria photograph album 50-80

CHINA & GLASS:

- 98 Black glass moon flask vase decorated with flowers and exotic bird 38 cm H 120-150



- 99 Pair of Royal Worcester porcelain figures of HM King George V and Queen Mary, each on ebonised plinth. overall 33 cm H 100-150
- 100 spare
- 101 Chinese pink ground vase decorated with 4 polychrome enamelled panels, 6 character marks to base 50-70
- 102 Early C20th Chinese yellow ground baluster vase decorated with 5 claw dragon amidst clouds, 6 character marks to base 50-70
- 103 Chinese Celadon baluster vase decorated with cranes on wooden stand 23H 50-70
- 104 Chinese celadon onion shaped vase decorated with cranes 22 cm H on wooden stand 50-70
- 105 C19th Chinese vase polychrome enamelled with opposing panels of figures, 6 character marks to base 40H 50-70
- 106 Chinese crackle glazed baluster vase painted with figures amidst prunus trees, signed 42H 50-70
- 107 Japanese baluster blue & white vase highlighted in gilt & manganese with birds & foliage 23h 100-120
- 108 Copenhagen blue ground ovoid vase decorated with iris, Numbered 1886, 47-7 18 h 30-40
- 109 Copenhagen vase decorated with a sailing boat & buildings, Numbered 2609, 1049 23h 50-70
- 110 Japanese blue & white bowl, polychrome enamelled with foliage 20 DIA 30-40

- 111 Japanese powder blue ground plate, splashed with gilt and decorated with birds & foliage 21 dia 30-50



- 112 Capodimonte mask head ewer painted with trailing vines & foliage on 3 claw feet 22H 300-350

- 113 Japanese Kutani plate decorated with figures in a landscape 33 dia 40-60
- 114 11 assorted Japanese Imari plates 100-150
- 115 C19th Chinese baluster vase & cover, polychrome enamelled with foliage, 6 character marks to base 36 H 50-60
- 116 Oriental cream ground vase polychrome enamelled with butterflies, foliage & scholarly emblems 31 H 40-50
- 117 Large pair of Chinese octagonal vases & covers, decorated in underglaze blue, 68cmH 200-300
- 118 Large qty of Chinese YT china decorated in Hong Kong including dinner service and coffee pot and cups 150-200
- 119 Collection of 27 Goebel birds and 4 other models (full list available in office) 70-100
- 120 Qty of Royal Worcester tableware Evesham pattern 20-40
- 121 Pair of Bohemian cranberry white overlaid table lustre's (both missing drops) 50-100
- 122 Spirit barrel with tap, rider side saddle painted on front c.1870 50-70
- 123 Breakfast cup and saucer by Adams with Alken scene in colour of cockfighting and breakfast cup and saucer by Adams with Alken scene in black of cockfighting 50-80
- 124 Three breakfast cups and saucers, VIP series made for Harrods by Royal Worcester, one fishing, one shooting, one driving, c. 1950 50-80
- 125 Pair of hand painted wine glasses, fox masks 30-40
- 126 Pair porcelain plaques, hand and transfer painted in silver metal mounts, new frames 40-60
- 127 Large qty glassware including decanters, vases, jugs and drinking glasses 50-100
- 128 Qty of china including T Goode & Co Ltd, London part dinner service, and other general and part services 80-120
- 129 Rheinisch German stoneware vases & stoneware model of a dog 40-60
- 130 Qty of glass, jugs & glass dome etc. 50-70

- 131 Pair of Chinese vases crackle glazed and gilt highlighted, 41 H and another pair of classical white vases 31H 50-100



- 132 Pair of Delft blue and white wall plaques (damaged), 59cm 80-120

- 133 A small C19th Chinese baluster vase painted with a landscape and Greek key borders, 13cm high and another painted with figures, 26cm high (one cracked) and an C18th blue & white dish, 36cm dia (with damage) 60-80
- 134 Staffordshire blue & white basin decorated with a chinoiserie garden and trophies pattern, 29cm dia 60-80
- 135 Two C18th Chinese blue & white plates, largest 36cm dia, another blue & white tin glazed dish and a Chinese famille rose plate painted with figures 23cm dia - all damaged 100-150
- 136 Pair of late C19th Meissen woodpeckers, 28cm high, some losses to beaks and branches 80-120
- 137 French blue 'lozenge' cut rectangular box with gilt metal mounts, 13cm wide, a pair of green glass cornucopia, and assorted coloured glass 80-120
- 138 Chinese jade dish, 19cm dia 80-150
- 139 Two Copeland Parianware busts 22cm high, three small busts of Queen Victoria, C19th Staffordshire figure of Uncle Tom and two Wedgwood jasperware plaques 100-150
- 140 A Loetz of Austria iridescent glass vase 19cm high 50-70
- 141 C19th rococo style porcelain floral painted mantel clock case, a set of four cherubic figures, a cloisonné box and a Chinese tea bowl 80-120
- 142 Qty of general china, household items etc 20-40
- 143 Large qty of Toby Jugs 30-60
- 144 An early Costa Rica pottery whistle, as a double bird; 2 equestrian slipware whistles & collection of 16 further studio pottery whistles 150-180
- 145 Palissy style pottery oval dish in raised relief with crocodile, ferns and reptiles & 3 pottery tiles (dish with broken ends) 30-60
- 146 Late C19th Japanese oviform vase with painted figures and blooming trees, 32cmH 150-200



147 Late C19th/C20th Chinese blue and white onion shaped vase painted with figures and a spotted deer, four character marks to base, 31cmH 400-500

148 Japanese Meiji period Imari baluster vase, 23cmH 20-30



149 Pair of Japanese Meiji period gourd vases with all over decoration, 31cmH 400-500

150 Chinese ovoid table lamp base in coloured enamels depicting lilies & trailing foliage, predominately in famille rose palette 180-200

151 Chinese Cantonese export famille rose bowl with decorated panels of flowers, butterflies & birds, 35cm dia 400-500



152 Pair of early C19th Chinese baluster vases, painted with figural panels amidst turquoise diaper work decoration, 35cmH 1000-1500

153 Japanese Satsuma lobed bowl with all over landscape & pagoda decoration, signed with lion, 25cm dia 300-400

154 Japanese Imari gilt metal mounted flared rim vase, 31cmH 300-400

155 Chinese blue and white tureen & cover, painted with a landscape & pagodas, 18cmH 300-400

156 Chinese Cantonese export famille rose jar & cover with alternate figural bird & foliage panels, 44cmH (damage to finial) 350-450



157 Pair of modern blue and white baluster vases & cover with Fo dog finial, 62cmH 200-250

158 Chinese Cantonese export famille rose vase with all over decoration & applied Chilong, 36cmH 350-400

159 Chinese porcelain gilt metal mounted table lamp with floral & foliage decoration on a turquoise ground, 41cmH incl. fittings 400-500

160 Japanese Meiji period Imari bowl of typical compartmental design, 21cm dia 40-60

161 Large modern jar & cover, decorated in under glaze blue with Fo dog finial, 64cmH 100-150

162 Japanese Kutani gourd shaped vase with all over foliage & insect decoration, 26cmH 80-120

163 Chinese blue and white ovoid ginger jar & cover, decorated with prunus with twin concentric ring mark to base 400-500

164 Pair of C18th Worcester blue and white pickle dishes, workman's mark to 1 (1 extensively damaged & re-glued, the other with hairline crack) 40-60

165 Czechoslovakian bone china tea service, decorated with swallows & a setting sun, 2 Indian Tree plates & a Japanese plate 40-60

166 Charlotte Rhead 'Autumn' leaf jug & assorted teawares, Haddon Hall 30-70

167 2 Hidden Treasures Limited Edition Birds 'Osprey' and 'Tawny Owl', boxed 50-70

LARGE & SMALL COLLECTABLES

- 201 Silver mounted ebonised oak stick London 1914, silver mounted cane London 1909 and another silver mounted cane London 1913 100-150



- 202 An Army & Navy leather suitcase, a canvas suitcase retailed by Harrods & another suitcase a tin trunk and a Wall Hanging 80-120

- 203 Vintage telephone, turquoise, marked to base 'Made in USSR' 20-40

- 204 Large qty of vintage tin collectables including a metronome, mother of pearl inlaid marquetry box, boxed set of weights, lacquer ware boxes, a pair of Zeiss binoculars Dienstglas 10 x 50 & Zeiss Clarovid camera 50-100

- 205 Accordion and squeeze box, C Wheatstone, Inventor, 20 Conduit St, London 80-120

- 206 Qty of general items including tin plate toy, chess sets, strongbox with key etc. 30-50



- 207 Robert Heber Percy's (Faringdon House) red evening tails with brass hunt buttons, tailors label inside stamped and named RHP, Kilgour, French & Stanbury of Dover St; Boot jack, photograph of The Old Berks Hunt meeting at Faringdon House, vintage riding hat & silks, S Merry & Co., St. James St, London and binoculars etc. 100-150

- 208 Qty of various lamps and shades etc 50-100

- 209 spare

- 210 Very large pestle, jam pan, kitchen scales, scuttle, etc 50-70

- 211 Pair of brass figural door stops as "Jolly old Topers", 27cmH 50-70

- 212 Arts and Crafts copper & brass fender 40-60

- 213 Model of Duke of Wellington upon his charger in military dress, under a glass dome 40-80

- 214 Pair of Hindu Indo/Persian Kris swords each with engraved blades and handles 85cm long 100-150

- 215 Cased Zeiss Jena Jenoptem binoculars 8 x 30 60-80

- 216 A Sudanese sword with twin groove etched blade in leather paddle shaped scabbard, a short sword with horn handle, and another sword with curved blade, a Kukri and two bayonets 80-120



- 217 Qty of Faringdon House "Estate" signs, "To The Lake, To The Garden, Lord Berners Walk, To Orangery...etc" 40-80

- 218 Pair of Chinese bronze onion shaped vases with raised decoration of birds & dragons on carved wooden stands, 47cmH 200-300

- 219 Mahogany cased banjo barometer, 82cmH 40-60

- 220 Victorian inlaid marquetry mahogany & rosewood wall clock with striking movement with original warranty dated 1894, by Kay & Co, Worcester. cw pendulum and key. 100-200

- 221 Pair of Russian cloisonné enamel twin handle bowls with duck head terminals, 19cmW 100-200

- 222 After E. BLAVIER, pair of bronze farm labourer figures, each with implement in hand, signed, 43cmH 1200-1800

- 223 A Nueva Esfera Terrestre Globe by J. Forest 300-350

- 224 An unusual American reverse painted wall clock in mahogany case with gilded eagle finial, the dia with single winding hole, 106cmH 1200-1500



- 225 Pair of neoclassical style ormolu three branch wall lights, 56cmL 500-600

- 226 Good Regency fitted sarcophagus horn work casket, 35cmL (missing 1 bun foot) 1200-1500

- 227 Pair of Chinese blue cloisonné ducks, the backs & wings as covers, 16cmH 800-1200

- 228 Tibetan bronze figure of a dancer 150-180

- 229 Good pair of Georgian mahogany weighted plate stands, 29.5cmL 700-900

- 230 Eastern bronze vase with chased decoration, 15cmH 40-60

- 231 Leather folder embossed with fruit by Finnigans, Manchester, Liverpool & London 40-50

- 232 C19th French rouge marble & gilt metal clock with enamel dial to a battery movement 250-300
- 233 C19th tortoiseshell circular table snuff box; the cover inset with a painting of 2 figures in a landscape, under glass with gilt rim. 200-250
- 234 Green glass 'malachite' effect rectangular scent bottle 40-60
- 235 Chinese soft/fruitwood Oni type mask, 8cmL 50-70
- 236 Chinese jade carving of 3 temple dogs, 15cmL 400-600
- 237 Unusual gilded seal in the form of a birds foot mounted on a Blue John egg, 95cmL, in original velvet lined suede case 700-900
- 238 Small rouge marble box & cover 20-30
- 239 Pair of carved Anglo Indian wall brackets, 36cmH 800-1000



- 240 Pair of lacquered brass Chenets, as a twin handled vase with flame & pine cone finials 400-500



- 241 C19th rosewood travelling vanity box fitted with various glass bottles with silver plated mounts 200-250
- 242 Silver plated oval twin handled centrepiece with chased & foliate decoration 150-180
- 243 Silver plated 2 bottle wine carriage 150-180

- 244 Qty of various tin trunks, wooden trunks, suitcases, boxes etc 50-100



- 245 Musical instrument: modern double bass from Faringdon House 50-100

- 246 Very large modern metal trunk 50-80
- 247 Brass and wirework nursery spark/fireguard, 91x69cm 40-80



- 248 Brass log bin with embossed decoration, fireguard, a pair of andirons & 2 further brass bins with padded seats 50-100

- 249 Pair of C19th steel fire irons with brass handles 80-120



- 250 3 blackened iron fenders, largest 120cm 40-80

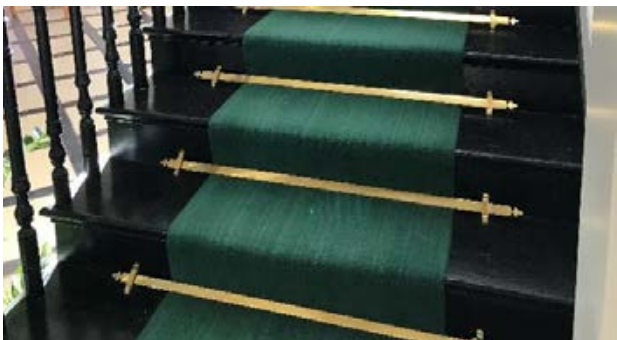


251 Blackened iron Lion rampant & armorial doorstop, 38cmH 50-80

252 Pair of walnut, parcel gilt dome top panels, each inset with a blue jasperware plaque, 96cmH 60-100



253 Pair of lead dolphin ornaments, 95cmL & a similar basket of flowers 100-150



254 41 polished brass stair rods with trefoil finials, 102cmL, together with attachment fittings 400-800



255 Plaster relief in arched frame 82 cm H x 44 cm W 50-100



256 Cast iron fire grate with pine cone finials 50-100

257 Brass kettle, brass twin handle urn, 2 fenders & various brass tie-backs 50-80

258 Gilt brass fender with shell motif and a pair of Art Nouveau style andirons 60-80

259 Pair of gilt wood split turned curtain poles with scrolling foliate finials, together with four matching loose finials and an ebonised & gilt pole screen 30-80

260 Large qty of 33 rpm vinyl records, British & European 30-50

261 Gilt metal frosted glass chandelier 50-100

262 Pair of Gothic style stained glass windows, another window & 5 clear glass lead lined windows 30-60

263 An Ordnance Survey hanging map of Great Faringdon, printed & published 191260-80



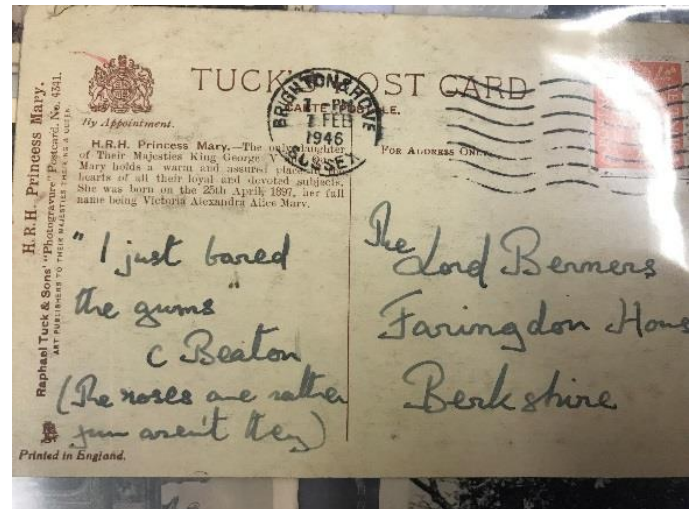
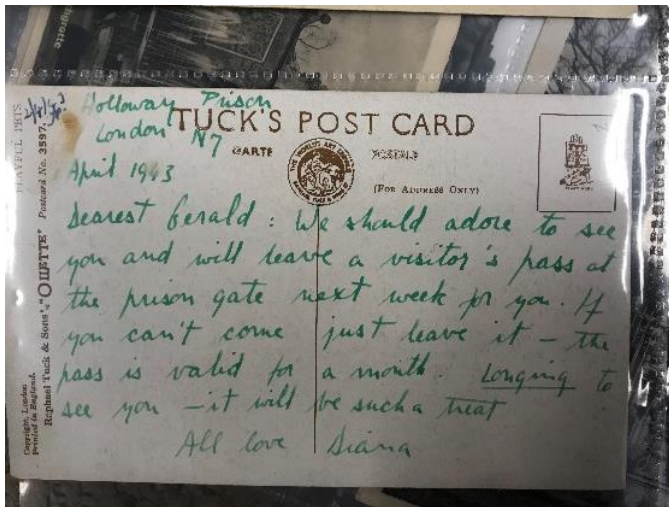
264 Vintage Spanish painted wooden hobby horse 800-1200

265 C19th Excelsior Lock Manufacturing Co. embossed leather trunk with Morocco leather & canvas lined interior, patented July 17th, 1866 450-500



Lot 266





Lot 266

Quantity of books, photographs, negatives, postcards , maps and ephemera etc. all relating to Faringdon House, Lord Berners and Robert Heber-Percy,

including numerous postcards to Lord Berners – including some from Cecil Beaton, Diana Mosley (Mitford Sisters, married to pre-war fascist party leader Sir Oswald Mosley) - written from Holloway Prison, 1943 ;

- 267 Pair of beadwork panels in ebonised Aesthetic movement frames, two further beadwork panels & two picture frames (6) 60-120



- 268 Chinese red painted textured rectangular panel with rows of calligraphy, 139x60cm 100-150

- 269 Brass & steel Serpentine fronted fender 80-120

- 270 Carl Zeiss microscope, Serial No. 272825 with various accessories in fitted box 100-150

- 271 Grand Tour bronze bust titled 'Omero' on marble plinth base, 38cmH 350-400

- 272 Large vintage brass corkscrew 50-70



- 273 French School, a bronze figure of a Stallion under saddle, raised on a marble base, 26cmH 800-1200

- 274 Toleware & gilt metal 3 branch lamp 150-180

- 275 Japanese bronze onion shaped vase with raised decoration 46H 400-500

- 276 Japanese onion shaped vase with raised decoration of birds and rams head handles flared neck 31H 150-200

- 277 Carved hardwood Chinese figure of an elder 53H200-300

- 278 Early Japanese bronze teapot the body with raised leaf decoration 14 cm dia 100-200

- 279 Art Nouveau clement Massier vase with separate gilded frame, the base signed " Lenormand" 21 cm H 400-500

- 280 Carved wooden tribal figure 101 H 500-600

- 281 Japanese bronze lobster with hinged moving legs and body, signed under body 37 cm L max 800-1000

- 282 Pair Japanese small bronze vases with raised decoration 24H 40-60

- 283 3 assorted Chinese paper parasols & 2 lace examples 40-60

- 284 Jacques Vintage part croquet set, comprising 5 mallets & 2 balls 60-100



- 285 Rolls of fabric, **Designer's Guild, wallpaper** (as shown above) & assorted material, upholstery fabric etc 50-80

- 286 Turkish chain mail with matching headdress 200-300

- 287 Qty of various wine racks 30-60

- 288 Qty of various modern wine racks 30-60

- 289 WWII Gas mask & a Haenel Air rifle 30-60

- 290 Praktica MTL5B camera with 3 lenses & an English gold plush teddy bear 25-45

- 291 Red Morocco & gilt leather gaming box with large qty of gaming tokens 60-100



- 292 Pair of polished stone obelisks, 94cmH 250-350

- 293 Spanish mahogany chiming bracket clock with silvered dial and ormolu decoration, Penay Sobvino, Madrid, 66cmH 400-600

- 294 Burnished embossed copper coal scuttle with brass swing handle on 4 paw feet 50-100

- 295 Bronze circular dish with crimped raised rim, the dish embossed with a crab 32 cm dia 150-200

- 296 Bronze study of a seated Mother and Child on a polished stone plinth 33 cm H 100-150

JEWELLERY & SILVER

Cabinet items etc:

- 297 Hallmarked silver composite canteen of flatware Crested & monogram 'C', mainly London 1827, 1828, 1829; 12 dessert spoons, 6 table spoons, 12 dinner forks, 6 dessert forks (59 ozt) and 5 dessert forks, London 1851, (5 ozt) & a pair of basting spoons, London 1776, (7 ozt), Total weight 71 ozt 550-700
- 298 Hallmarked silver, Kings pattern, large ladle, sugar tongs & 4 teaspoons, Crested, London 1837, 15 ozt; together with qty of Insignia & other plated flatwear 120-180
- 299 7 various gold wedding bands and rings & a gold Albert chain, 14.8g 25-50
- 300 18 carat gold solitaire diamond ring, an 18 carat white gold solitaire ring & an 18 carat white gold wedding band 450-500
- 301 Gold wedding band & 3 gem set rings, 4.7g 25-50
- 302 Empire style patinated metal figural clock & a reproduction Stanley of London telescope and a oriental style casket 25-30
- 303 2 gold sovereigns with gold mounts & chains 400-450
- 304 4 piece silver backed dressing table set, gold plated pocket watch, gold bangle ring & qty of costume jewellery 40-60



- 305 18 carat yellow gold, Columbian emerald and diamond ring; the central emerald of 2.8 carats 2400-3000**



- 306 18 carat white gold, five stone diamond ring of 1.44 carats 1600-1800**
- 307 Silver ring set with cubic zirconia's, emeralds and a central opal in the Art Deco style 40-60



- 308 18 carat white gold and princess cut diamond solitaire of 60 points 1500-1800**

- 309 Pair of 14 carat white gold and diamond stud earrings of 1.95 carats 2000-3000
- 310 Silver chain link Albert with stirrup spacers 60-80
- 311 Pair of white gold and diamond stud earrings of 40 points, clarity Si 250-350
- 312 Silver and cubic zirconia, Chanel style, pendant necklace 40-60



- 313 Pair of silver and cubic zirconia hoop earrings in the form of hearts 50-100**

- 314 Cultured pearl necklace with sapphire, emerald and diamond bar link 900-1500
- 315 Silver and plique a jour parrot brooch 40-60
- 316 Silver pill box with enamel lid depicting a fox 40-60
- 317 18 carat white gold, single stone, diamond ring of 1.57 carats, colour K, clarity Si 2500-3000



- 318 18 carat three stone, princess cut, diamond ring of 1.42 carats 2000-3000**

- 319 Silver whistle and vinaigrette with embossed case 180-220
- 320 Pair of silver, marcasite and opal set Art Deco style drop earrings 40-60

- 321 Silver and enamel set Art Deco style pendant necklace 50-60
- 322 Silver picture frame with easel back 25-45
- 323 Pair of white gold, emerald and diamond drop earrings 450-550
- 324 Silver ring in the form of a dragonfly 20-30
- 325 18 carat white gold and diamond ring in the form of a bow 350-450
- 326 Pair of silver and enamel cufflinks with Masonic symbol 40-60
- 327 Impressive white gold, sapphire and aquamarine necklace 1200-1400
- 328 Cast silver figure of an owl with glass eyes 50-60
- 329 Silver and coloured cubic zirconia spider brooch 40-60
- 330 Pair of silver gilt and onyx, Cartier style, earrings in the form of panthers 50-60
- 331 Pair of 18 carat white gold and diamond, daisy style, stud earrings 100-120
- 332 A two row cultured pearl necklace with citrine spacers 400-500
- 333 Silver and plique a jour necklace with two peacocks and a pearl drop 50-60
- 334 Silver, cubic zirconia and turquoise set pendant necklace 30-40
- 344 Long row of black and white freshwater pearls with Chanel style fittings 100-150
- 345 Pair of 18 carat yellow gold, ruby and diamond earrings of 60 points 400-600
- 346 14 carat yellow gold, heart shaped, diamond pendant necklace 250-350
- 347 18 carat white gold single stone diamond ring 400-600
- 348 White gold and diamond pendant necklace of flower form with South Sea pearl drop 500-600
- 349 String of black baroque pearls on white metal clasp inset with cubic zirconia's 80-100
- 350 Silver and enamel Art Nouveau style pendant necklace 40-60
- 351 18 carat white gold and diamond ring of 25 points 400-500
- 352 White gold and diamond pendant necklace 120-140
- 353 Pair of yellow gold double South Sea pearl earrings 180-220
- 354 Prince and Princess of Wales visit to India 1905-6 silver medal by Elkington & Co. with ribbon 300-400
- 355 Pair of silver fox head cufflinks 40-60
- 356 Brass spit jack with key 10-15
- 357 Pair of glass domes on bases, dome height 20cm 20-30
- 358 Modern cloisonne ovoid jar & cover, 20cmH 10-20
- 359 Soapstone figure of a seated Buddha, 16cmH 40-60
- 360 Modern silver toddy ladle, 33cmL 50-70
- 361 Bronze bust depicting a Gentleman on polished stone stand 19.5 cm H 200-250
- 362 Bronze bust of a gentleman on brass and white marble stand 21 cm H 120-180
- 363 Pale green onyx pen tray adorned with a standing chestnut horse 25 cm L 100-200
- 364 Pair Chinese white jade candlesticks in the form of seated dragons with circular sconce tops 13.5 cm H 700-900
- 365 Small bronze bust of Napoleon 12 cm H 100-200
- 366 Pair Loetz purple glass vases decorated with flowers 14 cm H 80-100
- 367 C19th French rouge marble mantle clock, the circular dial with 8 day movement striking a bell 200-250
- 368 C19th French rouge marble mantle clock of architectural form with Japy Freres two train movement 30-50
- 369 Andre Debrrie 'Le Parvo' Model L Cine movie camera, lens & reels 50-70
- 370 5 George III silver table spoons, various dates & a qty of plated cutlery 30-60
- 371 Silver hallmarked porringer, by HHP, Sheffield 50-70
- 372 George V silver jug, 1925 50-70
- 373 George V silver twin handle porringer, London 1910 100-150
- 374 Edwardian silver footed bowl on stand with Celtic style roundels on a matted ground, Birmingham 1909 150-180



335 Silver, marcasite and ruby set bracelet 150-200

- 336 18 carat yellow gold sweetheart brooch set with a large amethyst and diamonds to the wings 550-650
- 337 Silver flower shaped brooch 30-50
- 338 14 carat white gold, blue and white sapphire ring 400-500
- 339 Pair of silver and enamel cufflinks depicting a lady golfer 400-500
- 340 14 carat yellow gold, Art Deco style, aquamarine and diamond ring 400-500
- 341 Ladies genuine Mulberry purse, green leather 120-180
- 342 Pair of silver and enamel cufflinks depicting a Spitfire 40-60



343 18 carat white gold, oval shaped, sapphire and diamond ring of 90 points 650-750

- 375 George V silver twin handled bowl, London 1917 40-60
- 376 Chinese black overlaid reverse painted scent bottle, another, 6 further English/European bottles & 3 pieces of ruby glass 50-70
- 377 Late C19th French slate timepiece, a sewing machine & a plate rack 40-60
- 378 925 Standard silver & blue enamel lady's cocktail watch, a Gentleman's Rotary wristwatch, 2 further wristwatches, a silver brooch & yellow metal ring 30-60
- 379 Stained wooden cane work doll's pram 25-45
- 380 Late C19th/C20th School, pair of portrait miniature of 'Lady & Gentleman' initialled 'H.B.' 150-180
- 381 Pair of Regency style embossed hallmarked silver sifters, Chester 1903, 5.86 oz 150-250
- 382 Pair of hallmarked silver bottle coasters with pierced rims, London 1966 200-250
- 383 Set of 4 glass vanity bottles with hallmarked silver tops 80-100
- 384 Lady's Rolex Precision, 9 carat gold cocktail watch with chain link strap, 34g 600-700
- 385 Good quality silver plated tea & coffee pot, Walker & Hall 40-60
- 386 Gentleman's 'Lancet' stainless steel case manual wind chronograph watch on blue leather strap with German military mark on the back 600-800
- 387 Assorted silver to include condiments, match box holders, plated wares, pewter elephant head inkwell 50-80
- 388 Cased set of four Edwardian butter dishes and knives (three with porcelain liners) by Carrington & Co. 40-60
- 389 A Chinese silver novelty cruet set in form of a sedan chair, signed, in original wooden box 150-180



- 390 A pair of rococo style gilt metal three branch wall lights, and a pair of twin branch wall lights with eagle terminal (4) 150-250**



- 391 Four pairs of giltwood and white painted two branch wall lights in the neo classical style (8) 200-400**

- 392 Regular clock face with brocol escapement, the dial inscribed....Moscow, together with a wall clock, a silvered brass carriage clock and a drop dial wall clock case (4) 60-100
- 393 Set of Oertling of London Scientific Laboratory Precision Balance Scales, model No 48SB 100-150
- 394 Pair of silver hallmarked hoof matchstick holders 50-100
- 395 Early C20th brass carriage clock, a late Victorian inkstand and two other brass items 30-40
- 396 Assorted silver to include cigarette cases, ashtray, condiments and a collection of silver plated items, lobster picks, etc. 60-80
- 397 A Nazi dagger with spread eagle and swastika insignia, turned wrytham handle in shagreen effect scabbard 300-400
- 398 Wine - One bottle Chateau Mouton Rothschild 1945 (top shoulder) 100-200
- 399 Slate and hardstone oval plaque decorated in relief with cherries and flowering branches, 29cm high (some minor losses) and three shells 100-150



- 400 Pair of late C18th early C19th silvered epaulettes in original tin box 80-150**

- 401 Collection of regimental brass buttons by Simpson & Son, South Audley St, various others & regimental cap badges (Qty) 50-80
- 402 Primitive bronze study of a reclining female nude on a green marble base indistinctly signed 28 cm H 100-150
- 403 Bronze study of a female nude signed Gotze 43 cm H 800-1000
- 404 Set of 3 Bronze and ormolu triple wall light fittings, in the form of intertwined hand held serpentines surmounted with eagles 350-450
- 405 Georgian style mahogany weighted plate stand 20-30



- 406 2 C19th steel fire irons 50-80
- 407 Set of 3 C19th steel fire irons with spiral shafts 80-150
- 408 Pair modern lamps, chrome effect water jug with leather handle, and various other items 30-50

SPORTING MEMORABILIA & VINTAGE CLOTHES etc:

- 464 2 Edwardian side saddle whips 20-40
- 465 Leather Saddle, general purpose with knee rollers 30-40
- 466 'Musgrave' harness rack, mahogany & iron (stamped) 100-120
- 467 Silver topped malacca cane 25-45
- 468 Cricket bat 25-30
- 469 Folding, beech, boot jack 40-60
- 470 Folding, mahogany, boot jack 30-50
- 471 Adjustable shooting stick 20-30
- 472 2 leather swagger sticks 30-60
- 473 Leather collar box 15-30
- 474 Snooker cue - Riley 10-20
- 475 Cecil Aldin print in green frame 50-100
- 476 Green leather jewellery box 15-30
- 477 Pair of leather boxing gloves 30-60
- 478 Pair of ladies black leatherbuttoned ankle boots 30-60
- 479 Small leather sewing casket, complete with thimble & tools 30-60
- 480 Antler and mahogany crop rack 100-150
- 481 Leather attaché case, with key 20-40
- 482 Leather briefcase 1950's 15-30
- 483 Leather black attaché case (combination lock No. 310) 25-50
- 484 Vintage oak military stores sign, No.3 STORES.COY. R.A.O.C. (TA) 30-40
- 485 Mahogany double gun case with brass corners 100-150
- 486 Alligator skin (252 reg stamped) 30-60
- 487 Pair of lady's lace brown leather boots in the Edwardian style 50-100



- 488 Faux crocodile jewellery case 25-50
- 489 Large antlers, mounted 80-100
- 490 Leather jacket, bowler hat, and canoeing clothes 20-40
- 491 Silver mounted hunting horn by Swaine and Adeney 200-300
- 492 Soft purple leather vanity case 20-30
- 493 Alligator skin handbag and snake skin purse & comb holder 50-80
- 494 After Peter Biegel 'Lester Piggot Wins His Eighth Epsom' colour print, Norman Hoad 'Two Stable Lads with Horses' crayon, & 4 prints (6) 50-70
- 495 Duck Dri hunting jacket, 3 tweed sporting jackets, a suede coat & a fur jerkin by Irene Spierer, New York 40-60
- 496 Qty of horse racing related books & magazines to incl. Lonsdale Library & assorted equestrian/racing prints & a further black & white album of races & study's , circa 1900-1944 100-200



- 497 Rouch Wilmot Library - Derby Winners and Grand National Winners, 4 volumes of black & white photographs, circa 1880-1936 100-200
- 498 3 volumes Landseers Works, published by Virtue & Co., London 1879, with numerous black & white illustrations 50-80
- 499 Leather saddle flask with glass bottle & silver plated top & a limited edition Japanese print 40-60
- 500 2 brown leather general purposes saddles, 17.5" 50-70
- 501 Crocodile handbag, dark tan leather, lined c.1950 50-70
- 502 Crocodile handbag, dark brown leather, lined c.1950 50-70
- 503 Siberian red squirrel knee length fur coat retailed by Harrods 60-100
- 504 Cased wire cutters with saddle fitment by Beauchamps, London stamped Jaffray, KDG c.1920 60-80
- 505 Solid oak framed 'Derby' silk scarf 1948 'My Love' owned by Aga Khan, jockey W H Johnson 150-200
- 506 Hunting crop, very unusual with cast metal and enamelled hook, plaited leather covered shaft and good lash c.1940 80-120
- 507 Gong in stirrup iron with crop striker c. 1920 80-120
- 508 Set of four hand coloured cockfighting prints from Alken paintings, published 1841 40-60
- 509 Two leather covered showing caches 30-50
- 510 Pair bronze greyhounds on base signed Dubucand 100-150



- 511 Silver plate mounted pigskin/glass pocket flask by Dixon, dated 26 August 1902 80-150
- 512 C J Apperley 'Nimrods Hunting Tours' 2 vols, 1st American edition 1836 published Casey, Lea & Blanchard, Philadelphia, and R Surtees 'Handley Cross & Sponge's Sporting Tour, and leather, marbled & gilt tooled bindings published by Bradbury Agnew & Co 80-100
- 513 Ranker & Co Ltd (India) pith/polo helmet size 7 and a quarter, a black silk top hat & a bowler hat 50-70
- 514 Pair of Gentleman's brown leather front laced hunting/polo boots with wooden trees 50-80
- 515 Thirty volumes 'Racing Calendar' C19th and a General Stud Book 1832 30-50

516 Pair brown zip up leather riding boots approx size 6/7 40-80



517 Muhammad Ali signed shorts with book of provenance 600-1000

518 Ladies full length fitted dark brown mink fur coat size 8/10 80-150

519 Silver mounted ebonised walking cane with pommel handle (possibly rhinoceros horn) & another walking cane (2) 80-120



520 Ranch mink jacket by 'Glyn & Leinhardt - Fine Furs of Manchester' 200-250

521 Saga Ranch mink jacket 200-250

522 Small leather suitcase by 'John Bagshaw' 20-40

523 Tan leather writing case/attaché 20-40

524 Dark brown crocodile handbag with twin handles 80-150

525 Dark brown crocodile handbag with 2 handles 60-120

526 1940's tan crocodile shoes 30-60

527 Crocodile vanity case 'Harrods' of London, C1920 350-450

528 Mulberry belt, bag & purse Maroon coloured Mulberry handbag and grey Mulberry wallet 80-120

529 Hallmarked silver candle snuffer in the form of a hunting horn by 'Thornhill & Co' Bond Street 90-120

530 Child's Malacca hunting whip 30-60

531 Dark brown crocodile handbag 60-120

532 Lizard skin handbag by 'Riviera' 30-60

533 Light brown crocodile handbag with single handle 60-120



534 Dark chocolate brown crocodile handbag & purse 70-120

535 Brown crocodile handbag with matching crocodile mirror inside 40-80

536 Lizard skin handbag by 'Jane Shilton' 30-60

537 Crocodile bag with single strap 40-80

538 Dark brown crocodile handbag in oblong box shape by 'Premier America' with purse 100-150

539 'Riviera' brown crocodile handbag with tan colour twin handles 60-120

540 Bamboo horse measuring stick 100-150

541 C19th mahogany boot & whip stand 200-250

543 Green canvas & leather trunk by Copland & Lye of Glasgow 200-300

544 Hunt tail coat with Cottlesmore brass hunt buttons & waistcoat etc. on manikin 40-80

545 Child's hunting crop 40-80

546 Bamboo hunting crop 40-80

547 Silver mounted Malacca hunting crop 40-80

548 Early Malacca hunting crop 40-80

549 Henry Keats Tandem post horn 150-200

550 Bamboo shooting stick with bergere seat 70-100

551 Silver tipped swagger stick '1914' 30-60

552 Adjustable shooting stick with leather seat 40-60

553 Rectangular leather case with green baize lining, key & aluminium locks 50-100

554 Christie's straw boater, size 7 1/8 20-40

555 Large leather suitcase with chrome locks 60-100

556 Fitted leather vanity case with brass locks 50-100

557 English tan leather case 200-300

558 Mappin and Webb black leather dressing case with brass fittings 30-50

559 Brown riding bowler hat by Christie's, size 7 3/8 30-50

560 Leather hat box with key 100-200

561 Pair of bone boat pulls 30-50

PICTURES:

- 562 LEECH print in oak frame 'No Consequence' 60-100
- 563 Coaching print, framed 40-80
- 564 Pair of prints in maple frames of a Life Guardsman & a Lighthouse man 30-60
- 565 Print of Trotting Race Horse '1898' (af) 'Nunsuch' Prince of Wales' horse 30-60
- 566 LIONEL EDWARDS print 'Returning Home' 30-60
- 567 W. OSBORNE Hunting print of George Lane Fox Esq. 30-60
- 568 Coaching print in rosewood frame 30-60
- 569 Pair of JOHN LEECH prints, 'Gone Away' & 'Come Hop', in oak frames 40-60
- 570 After RUSSELL FLINT, print of a 'Reclining Nude Lady' 20-30
- 571 Oil painting, study of a bull in a pastoral landscape, 28x36cm 50-80



- 572 Textile study, Image of African wildlife, in maple frame, 36x24cm 40-80**
- 573 Oil painting, marinescape with fishing boats & figures on the shoreline, in gilt frame, 38.5x27cm 50-80
- 574 Oil on panel, Peaceful river scene of figures in a punt with a boathouse in the background, signed, 130x220cm 50-80
- 575 ELENA SCHNEIDER, a still life watercolour, together with an oil abstract & a signed lithograph (3) 50-80
- 576 Oil painting study of Jack Russell terriers, in an oak frame, 29x21.5cm 50-80
- 577 NIGEL HEMMINGS, signed lithograph of black Labradors and a JOHN FITZGERALD print of a horse in stable, signed, (2) 50-80
- 578 Ornithological oil painting of two Macaws, signed with monogram 50-80
- 579 AMY SCOTT, C19th/Early C20th watercolour, a portrait of her sister Eliza Charlotte Scott, 25x17cm 50-80
- 580 After Salvador Dali, A studio framed surrealist painting planet design 50-80
- 581 C19th English School watercolour, extensive Highland scene with figure, cattle & farmhouse, gilt framed, 26.5x43cm 50-80



- 582 PEGGY WICKHAM, vintage print of Ponies in a meadow, framed and glazed, 44x55.5cm 50-80**
- 583 Oil painting portrait of an African woman in traditional dress, signed, 36.5x26cm 50-80
- 584 Oil painting of Terrier dogs chasing a rabbit, oak framed, 29.5x38cm 50-80



- 585 DAVID SMITH attributed pastel portrait of a seated nude female, 59x46cm 50-100**
- 586 C19th oil on panel, Woodland landscape with figure & a C19th watercolour of A Coachman with horse and carriage (2) 50-80
- 587 JOHN EASTLEY attributed, studio framed pastel portrait pose of a seated nude female, 40.5x26.5cm 50-80
- 588 Watercolour landscape of Cattle in a meadow, signed and dated, in gilt frame, 15.5x25cm 50-80
- 589 Homage to Pablo Picasso, oil painting portrait of A Woman in abstract, 58x48cm 50-80
- 590 C19th/20th watercolour of country cottages by a track, signed, in gilt frame, 24.5x45cm 50-80
- 591 An Impressionist style oil painting of Tango dancers, 56.5x41cm 50-80
- 592 Oriental School watercolour portrait of a Japanese fisherman, signed & monogrammed, 48x24cm 50-80
- 593 C19th oil on board, Farm scene with man & livestock; an oil painting seascape and a watercolour of a Middle Eastern boy (3) 50-80
- 594 J. BALL 1966, pastel of a reclining nude, gallery label to verso, 35x45cm 50-80



595 Tribal Art, pastel portrait of an African Tribesman, signed and dated, 59.5x44cm 50-80

596 C20th School, framed pastel portrait of a reclining nude female, label to verso, 50x34.5cm 50-80

597 GEORGE OYSON 1925 watercolour, a peaceful village scene with cottages and woman on track, 32.5x23cm 50-80

598 Selection of framed pictures: Country landscape, watercolour, pastel and a botanical watercolour (4) 50-80

599 C19th school watercolour, marine sailing scene, 60x90cm 1500-2000

600 TOM MACDONALD (1914-1985 Scottish) Gouache 1964, Wrestlers, signed lower right, 38x52cm 100-150

601 Pastel greyhound 'Toffee' by Marjorie Cox signed 1976 80-120

602 Pastel of two cavalier King Charles by M Trench, signed 1976 80-120

603 Contemporary School 'Landscape oil on board 98x98cm 60-80

604 'Kameher (?) C20th abstract study, oil on canvas, indistinctly signed, 80x60cm 100-150

605 W. Westofen (C19th) Figures & flock of sheep in a snow capped landscape, s. d. 1878, 23x35cm 120-180

606 C19th English School 'Shepherd and flock in a landscape', watercolour 25 cm x 36cm & another C19th School 'Figures on path in mountainous landscape, watercolour 52cm x 43cm 60-100

607 Constance Parker full length female nude, oil on board, unsigned (with reverse study verso) 90cm x 60cm. Provenance purchased direct from C Parker studio collection 50-80

608 Bopkane - C20th Figures in an interior, pencil & watercolour inscribed verso, 50cm x 42cm, a modern abstract & a C20th Russian (?) School landscape, oil, signed (3) 60-100

609 C19th Continental school, a pair of oil on canvas, 'Two figures before a church tower in river landscape' & companion 'Boats in a lagoon', 16x22cm 80-120

610 Elizabeth Fox (contemporary) 'Skyscape' oil on board unsigned 87cm x 87cm 100-150

611 Set of five Italian 'Tyrollean' coloured engravings/lithographs, 36cm x 37cm 100-150

612 After Fred Roe 'Good-Bye, My Lads' chromolithograph, a black & white portraiture photograph of Queen Alexandria and various black & white photographs, engravings & chromolithographs 80-120

613 Constance Parker study of a female seated, oil on canvas, signed verso 74cm x 48cm 60-120

614 Early C19th English School portrait of a gentleman, seated, pastel, 24cm x 20cm 100-200

615 Farrant (contemporary) 'Figures in a street' charcoal drawing, signed 91cm x 39cm and another by the same hand 100-150

616 C19th English School 'The Coast, Dover' watercolour heightened with white 23cm x 33cm 80-120

617 David Hankinson 'Lichen and Hazelnuts' watercolour on board, monogrammed and dated '70, oval 42cm x 32cm 60-80

618 C19th continental school (German) 'Figures beside a river in a landscape' oil on canvas, 34cm x 46cm & a companion study, a pair (2) 400-600

619 C20th School 'Study of Two Ducks' watercolour 14cm x 23 cm, English School 'Corner of The Thames near Kelmscott, watercolour, and a print 25-45

620 W Bromley after R Bowyer study of Lord Nelson, black & white engraving 62cm x 41cm, a stipple engraving of George IV, & a black & white engraving of Queen Victoria upon a rearing horse published 1849, & another portraiture engraving (4) 100-200



621 Weaver (mid C20th) 'Woman and Child' oil on canvas, 25x34cm, European School 'Tower & Bridge' oil on canvas 48x65cm, South American School 'Primitive' pencil drawing & four further pictures relating to Faringdon House 100-150

622 Qty of assorted pictures and prints to include Sally Duckbury limited edition black & white print, Turkey costume prints 40-60

- 623 C20th Russian School 'MY3BIKA' oil on canvas, initialled and dated 1991 lower left, 80x79cm 50-70



- 624 Paul Hedley 'Evening landscape with cattle' oil on canvas, 41cm x 46cm 100-200
- 625 Frances Gordon Fraser 'River Scene at Sunset', watercolour signed, 20cm x 48cm & a companion, a pair (2) 50-100
- 626 J C Wren 'St Michaels Mount' watercolour, signed & a nautical pencil sketch by Sam Brown 60-120



- 627 After Snaffles 'Wipers' & 'Bon Voyage' a pair of lithograph prints 100-150
- 628 Qty of original artwork to include Alibarbar, Super Ted, Sylvanian Families 50-80
- 629 Manner of George Morland 'Love and Hope' and 'Love and Jealousy' pair of stipple engravings bears Thomas Agnew labels verso, and five similar 100-150
- 630 C19th English School 'Young girl seated in a wood reading a book' oil on canvas, 29cm x 24cm 100-150
- 631 After Snaffles 'Once upon a Time' coloured lithograph, signed with snaffle bit 80-120
- 632 Two coloured military prints, four black and white engravings of topographical and country seats and a sporting print 30-40
- 633 Early C20th 'Country Mansion beside a river with bathers', oil on panel indistinctly signed, 25cm x 35cm 60-80



- 634 After Sturgess, Steeplechase chromolithograph in oak frame, 44x66cm 30-60
- 635 Set of four limited edition woodcuts, circa 1920-30, with views of Malta indistinctly signed Robert, inscribed and numbered (4) 40-50
- 636 C20th school, "Family portrait group" in the C18th manner, oil on canvas 90x120cm 300-400
- 637 C19th English School, head study portrait of a young girl, oil on canvas, 37x30cm 40-60



- 638 English School - Portrait of Revd Canon John Mervyn Prower, seated at a desk with books, half length, oil on canvas, 90x70cm
PROVENANCE: The Revd Canon John Mervyn Prower was born in 1784. He succeeded his father Revd John Prower, as Vicar of St Mary's Church, Purton in 1827 and remained Vicar until his death in 1869. He was part of a clerical dynasty. He was Rural Dean of Cricklade and an honorary Canon of Bristol Cathedral. In the late 18th & 19th centuries, the Prower family were an important influence on the religious life of Purton Parish. The family gave silver plate to Purton and Braydon Churches. The Prowers were efficient and were praised for their pastoral care but were criticised for not engaging in the religious controversies of their day! 250-400
- 639 F. Ridgway (circa 1925) pair of Arabian street scenes, watercolours, signed & dated, 14x27cm; and another (3) 60-100
- 640 After David Risk Kennard, 'Flower and Carriage' colour print, signed, 60x42cm 30-50



641 ROBERT STONE (1820-1870) Pair oil on panel hunting scenes, each signed lower right R Stone. and labelled on frame. 15cm x 30cm 400-600



643 Early C19th Continental School, oil on canvas, Full lifesize portrait of a Gentleman in Van Dyke costume, possibly Spanish, 235x146cm 800-1200



642 Late C18th/early C19th English School, oil on canvas, pair of oval portraits of an Elegant Lady, 73x59cm 800-1200



644 Late C18th/early C19th Continental School, oil on canvas, Girl milking a goat with sheep in foreground, cows & milkmaid behind under a bank & trees, 64x57cm 800-1200

645 3 Cecil Aldin prints, The Cottesbrook Hunt. 33 x 66 in oak frames 100-200

RUGS:



650 Finely hand woven needlepoint carpet of Aubusson style, with central cream floral medallion, bordered by red and blue and beige patterned borders, 4.23x3.36m 1200-1500

651 Large room size wool carpet traditional design with large central square panel inset with oval flower and motif design, surrounded by cream border with inset circular motifs of leaves and large border of garland flowers and scrolling leaves all in colourful designs. 440 cm x 364 In need of restoration and repair 200-400



652 Persian Tabriz carpet circa 1940 attractive design with red border with motifs and central panel of blue ground with all over flower motifs, 400x286cm 1800-2500



653 Pure silk oriental rug with cream ground and red and blue borders 1.90 x 1.22m 300-400



654 Antique Persian Heriz carpet with central red ground and blue and red borders 3.75 x 2.81m 1500-2500

655 Small traditional rug with dark crimson ground with fine white border and fringes. Central motif with white ground surrounding all over line patterns 50-80



656 C19th fine Peking Chinese carpet, neutral ground and borders of blue foliage 3.48 x 2.77m 500-600

657 Small rug with all over pretty design of flowers in pinks and blues, cream ground with rectangular parallel borders in pink with flower design 145cm x 228cm 80-120



658 Rare and striking C19th Indian Agra carpet 5 x 3.73m with red square central ground and wide cream/red/blue borders 4000-5000

659 Old persian rug with fawn/pale pink and navy ground in traditional design, central motif and rectangular line borders. 132 x 80 40-60



660 Unusual c.1920s Turkish Anatolian carpet in cream, beige and green 2.8 x 2m 1200-1800

661 Old persian runner, with black/dark navy ground and striking diamond motifs in pinks/oranges and multi colours. Border of flower motifs 40-80



662 c1900 Anatolian carpet with central red medallion and all over geometric borders of browns, cream, greens and reds 2.87 x 1.6m 800-1000

663 Contemporary rug with bright multi colour, reds, greens, browns and greys of geometric stripe designs 245 x 170 cm 250-350



664 c1920's Persian Sarab runner carpet with geometric border and central design in reds, blue beige and cream 4.23 x 0.94 m 600-800

665 Antique Caucasian runner with central panel of motifs in strong colours on dark navy blue ground and geometric border with motifs in blues and reds and creams 368 x 148 cm 300-500



666 A large hand woven Needlepoint carpet with large blue, pink and cream floral motifs on black ground 4.53 x 3.57 m 1500-2500

667 Antique Shahsavan Kilim, Persia, Circa 1900's, 3.08x1.95 metres 600-800



668 A finely woven Aubusson rug with all over brown and red foliage design on a beige ground 276 x 182 800-1000

670 Antique Anatolian Oushak carpet light and dark blue pattern on orange ground 2.80 x 2.15 m 600-800



672 c.1920 oriental carpet with all over geometric pattern and border in red, blue and orange 2.92 x 2 m 400-600

674 Rare and unusual c1920 light coloured Spanish Cuenca carpet with an Arts & Crafts design in neutral beige colours 5 x 3.8m 3000-4000

FURNITURE:

- 700 George II mahogany table for restoration 30-40
- 701 George III oak later carved corner cupboard and a Victorian carved oak sideboard 50-70
- 702 C19th mahogany dressing table mirror and a japanned tripod wine table 50-70
- 703 Georgian style mahogany twin pedestal oblong dining table with single leaf, 215x121cm 200-400
- 704 Victorian walnut Davenport with sloping fall & bank of single drawers on sledge end supports - bears paper label 'M. H. Baker, Evans & Sons, Lescher & Webb Ltd.' 120-180
- 705 Edwardian mahogany bow front dressing table and a two door glazed cabinet 50-70
- 706 Pine waterfall bookcase, and a wicker stool 40-60
- 707 C19th Scottish oak long case clock, the arched painted dial inscribed 'Tho's Rutherford, Jedburgh' 150-200
- 708 Pair of Edwardian mahogany satinwood banded bergere chairs, and a C19th country stick back chair 40-80



- 709 Pair of C19th French Bergere chairs with traces of paint & gilding, with floral needlework upholstery on stop fluted legs (needs restoration) 200-400**
- 710 Mahogany double wardrobe 169 H x 130 W and tall cupboard 40-80
- 711 Modern walnut crossbanded extending dining table on twin pedestal (two extra leaves) 239cm fully extended 100-150
- 712 Georgian mahogany drop leaf table 73Hx90Wcm 30-50
- 713 Sheraton revival bureau bookcase, 225Hx91Wcm 80-150



- 714 C18th/C19th oak moulded front chest of 2s and 3L drawers on bun feet 113 cm w x 84W x 50 W 200-400**

- 715 Victorian rosewood card table with Serpentine top on carved & fluted support, 95cmW 250-350
- 718 Victorian walnut, floral marquetry inlaid pier cabinet with glazed door on plinth base, 84Wx107Hcm 200-250
- 719 C19th mahogany freestanding corner cupboard with glazed door, over door & drawers, 87cmH 50-60



- 720 Good Quality large modern light beech dining table, with extra leaves extending to an oval, 160cm dia extending to 260cm 200-400 (& Rug Lot number 651)**
- 721 6 black & chrome modern chairs 20-40
- 722 Set of 4 C19th elm wheel back Windsor chairs (4), & 2 Georgian style chairs 40-60
- 724 Good ladies walnut Dutch marquetry desk with a cupboard and shelved back, a single drawer on French cabriole legs with ormolu decoration, 74cmW 1500-1800
- 725 C18th/C19th inlaid and carved oak panelled coffer, 54cmH x 160cmL 50-80
- 726 Victorian mahogany side table, oak side table, Edwardian chest of 3 long drawers, Contemporary stained oak dining table & Contemporary pine effect extending dining table 30-50
- 727 Pair of C18th style giltwood oblong upholstered stools on gilt effect cabriole legs, 121cm w 1500-1800
- 728 Small two tier mahogany oval occasional table with brass edging, legs & castors, 62Lx56Hcm 400-600
- 729 Old pine dressing table 105cmW 20-40
- 730 Nest of 3 Chinese burr wood occasional tables, largest 66cmH 300-350



- 731 Victorian walnut floral marquetry inlaid breakfast table, the circular top on carved tripod base, 142cm dia. 2500-3000**

- 732 Georgian mahogany demi lune card table with satinwood & mahogany banding, 93cm dia 400-600



- 733 Regency mahogany crossbanded sofa table on down swept reeded end supports, 157cm fully extended 400-500

- 734 C18th cross banded walnut bureau with fitted interior above 2 short & 2 long graduated drawers on bracket feet, 92Wx103Hcm 800-1200



- 735 Pair of C18th style walnut framed high back chairs with needle work tapestry upholstery (2) 400-600



- 737 Victorian walnut needlework high back nursing chair on cabriole legs 40-60

- 738 Late Victorian cut and moulded glass ten-light chandelier with baluster shaft hung with loops and two tiers of scrolled branches hung with swags and per-drops, fitted for electricity (lacking bowl)

approx 48" high, Provenance, the front porch at Faringdon House 600-800

- 739 Harlequin set of 12 various George III and later mahogany dining chairs, (12) Some for restoration 100-200



- 743 Leather upholstered beechwood rocking chair 80-150

- 744 Zimmerman upright piano with overstrung action 50-80

- 745 Two large domed shaped white painted mirrors, 132cmH 60-80



- 746 Good contemporary large kitchen island unit, painted grey with brass handles and with hardwood top, 142x108x92cm 200-400

- 747 Stained pine writing desk of 4 long drawers with an opposing cupboard 137 cm W 40-60

- 748 Pair green deep seated traditional upholstered arm chairs for re-upholstery - original leather but damaged 40-80



- 749 C17th carved oak, high panelled back bench (needs restoration), 206Lx145Hcm 300-500



750 George III mahogany semi circular side table, the waved frieze on moulded square chamfered legs formerly the end section of a dining table 122 cm wide 50-80



751 Large Chesterfield style, crescent shaped, button backed horsehair sofa in floral upholstery, three brass castors stamped Howard & Sons, 200-400



752 Three-fold, leather on canvas, screen painted with a river landscape & floral garland, 166cmH 100-200



753 Chinese, 4-fold silk black screen with floral crewel work decoration, 170cmH 100-200

754 Pair of Continental tall mahogany cabinets with chequered doors, flanked by reeded quarter columns, 115Hx38Wcm 100-200

755 C19th mahogany chest of two short and three long drawers (some damage) 125x55x114Hcm 50-100



756 Victorian mahogany sideboard of Georgian design with canted front and three short drawers and a cupboard on square tapering legs, crossbanded overall in satinwood with brass lion-mask and ring handles, 137cmW 150-250



757 Early C19th mahogany two tier buffet on lobed supports to heavy brass wheels, 130cmW 150-250



- 758 Empire ormolu-mounted mahogany dwarf cabinet with two pleated silk doors enclosing small drawers and columns to the angles on bun feet, surmounted by a white marble slab, 91.5cmW 100-150



- 759 George III mahogany four post bedstead with fluted and reeded baluster columns surmounted by a moulded cornice, hung with red damask bed curtains, bedspread and valance, 48in wide.

Provenance: The "Red Bedroom" Faringdon House, Oxfordshire, which has recently sold, and was the home of Lord Berners - composer, writer, painter. He made FH the centre of a glittering social circle in the last century, entertaining some of the most diverse, creative and influential people during the 1920/30s. Guests included Evelyn Waugh, Siegfried Sassoon, John Betjeman, The Mitford Sisters, Salvador Dali, HG Wells, Gertrude Stein. Many guests stayed in the "Red Bed", including Salvador and Gala Dali (see illustration of signature in guest book). Famously quoted by Nancy Mitford (Mitford Sisters & author of Pursuit of Love, Love in a Cold Climate) in her article in Homes and Gardens in 1950s, and again in the Book 'The Mad Boy, Lord Berners, My Grandmother and Me' (Lot 266),

Nancy Mitford..... " I can remember, during the tedious or frightening but always sleepless nights of fire-watchings in wartime London, that the place I longed to be in most intensely was the red bedroom at Faringdon, with its crackling fire, its Bessarabian carpet with bunchy flowers, and above all its four-post bed, whence from beneath a huge fat fluffy old-fashioned quilt one can gaze out at the view, head still on the pillow...." 200-400

- 760 George III mahogany clothes press, upper part with two doors with two short and two long drawers below on splayed feet, inlaid with oval panels, 129.5cmW 150-250

- 761 Russian mahogany bench/day bed with scrolled top rail, the back and seat upholstered in green damask style cloth, the box base with one long drawer, 216x89x126Hcm 300-400
- 762 C18th oak mule chest, the planked top over a triple panel front and two drawers on bracket feet, 136cmW 100-150



- 763 George III mahogany kneehole desk with rectangular top and seven drawers of various size about the recessed cupboard upon bracket feet 89cm W 200-300



- 764 Edwardian mahogany card table with swivelling crossbanded rectangular top with square out-tapering legs & C20th walnut hanging bow front corner cupboard with glazed door, 85Wx94Hcm 150-200



- 765 Large Art Nouveau carved oak dresser, 157Wx215Hcm & a Continental mahogany cabinet 100-200

766 French carved oak dresser, 162cmW (elements missing) 20-40



767 Embossed and painted leather 3-fold screen 195Hcm 80-120

768 Mid-Georgian small mahogany rectangular bureau with sloping front and four graduated long drawers below on ogee bracket feet. 30"W 150-200

769 Edwardian mahogany chest of four graduated drawers, 97cmW 50-70



770 C18th carved oak mule chest with lunette & figural decoration on stiles, 125cmW 100-200

771 Late Victorian pitch pine, mirror back, dressing table on ring turned legs united by pot shelf, 122x55x153Hcm 50-70

772 C18th mahogany circular top drop leaf dining table on tapering legs to pad feet, 130cm dia 100-150

773 Edwardian mahogany sofa table, twin flap top above two short drawers on plain end supports and splayed legs (poor condition), 137x67cm 40-60

774 Victorian mahogany sofa table with rounded rectangular twin flap top and two frieze drawers, the obverse with false drawer fronts on plain trestle ends and splayed fee with brass caps and castors 162 cm wide open 50-100

775 Regency Gentleman's mahogany fitted wash stand 60-100

776 Large mahogany triple panel mirror 239cmH, another smaller mahogany framed mirror in swept frame, 158cmH and three small mirrors 80-120

777 Late C19th mahogany breakfront kneehole desk, fitted nine drawers around a central cupboard on bracket feet, 123cmW 100-200

778 Vintage turned beech bamboo effect cot bed 80-120



779 Early Victorian giltwood cheval screen, the shaped rectangular panel worked in petit point with a smiling girl at a window, the frame carved with scrolling foliage and flower heads upon trestle feet, 24" wide. 40-80

780 C18th triple panel oak coffer on stile supports, 119cmW 60-80



781 C19th mahogany Serpentine fronted linen press, fitted, a pair of doors enclosing four sliding drawers over two short drawers & one long drawer on bracket feet, 126cmW (one door off) 150-250



782 George III mahogany breakfront sideboard with two cellaret drawers and two short drawers on square tapering legs, crossbanded overall and inlaid with ebonised and boxwood stringing (some splits) 213x80Wcm 200-250

- 783 Set of four James II grained beechwood dining chairs, each with high arched panelled back inset with a split-cane panel, the split-cane seat on S-scroll legs united by an arched front stretcher 100-150



- 784 George III mahogany rectangular sideboard with deep cellaret drawer and three short drawers on later square tapering legs, adapted, faded later legs, 61"W 80-120



- 785 C18th Italian walnut crossbanded floral marquetry & figural inlaid commode, fitted three drawers on square tapering legs, 122cmW 400-600

- 786 Pair of late C19th pole screens, each with floral printed panels on tripod legs, 187cmH 50-70

- 787 George III mahogany tray top commode with tambour front and slide out drawer, on square chamfered legs, 51x41x80Hcm bookcase 200-300

- 788 Carved mahogany glazed bookcase with adjustable shelves and a bow front dresser (2) 50-80



- 789 Mahogany single Four Poster bedstead with hexagonal baluster columns, the arched cornice hung with drapery, inlaid with boxwood stringing and with urn finials. 42"W 80-150



- 790 George III mahogany breakfront part glazed library bookcase below a moulded swept cornice with central vase finial, 218Lx294Hcm 1000-2000

- 791 Continental walnut veneer armoire with mirrored door 95 w x 200 H 50-100

- 792 Edwardian upholstered window seat and mid Victorian ebonised two tier etagere 80-120



- 793 C19th Italian Sorrento ware, occasional table with all over floral figural and chequer inlaid decoration on four scrolling legs, 57cmW (top split) 100-150



794 Unusual C19th bird's eye veneered mahogany Kingwood crossbanded corner fold over card table with drawer on square tapering legs, 95cmW 300-400

795 Qty various occasional tables, pot cupboards etc 50-100



796 Early Victorian polychrome and ebonised centre table, the circular top painted with a floral spray amid strapwork with baluster shaft and shaped feet. 60 cm dia 200-400

797 Regency ebonised cheval mirror, the rectangular swing plate flanked by ring turned pillars with a pair of brass sconces (two further sconces missing) on splayed feet, 158cmH 300-500

798 French decoupage five-fold screen with applied coloured figural lithograph within ebonised frames 60-100

799 Continental mahogany empire style wardrobe with bevelled mirror door, above 2 base drawers. 165 w x 22 H 80-150

800 Large stained pine wardrobe with one mirror-glazed door and carved cresting. 113 W x 246 H 40-60

801 Early C20th oak freestanding corner cupboard in two sections 30-50

802 Victorian walnut loo table, oval top on four scrolling legs, 143cmH 150-250

803 George III style mahogany pedestal desk with bank of three drawers to each side 50-70

804 Early C20th mahogany waterfall bookcase, fitted, 2 drawers, 144cmH 100-150

805 Pair of Aesthetic movement pollard oak single door wardrobes, 51Wx234Hcm (part of compactum) 80-150

806 Late Victorian walnut framed button back Chesterfield for re-upholstery 100-200

807 C19th button back Chesterfield for re-upholstery 50-80

808 Early C19th mahogany two door cupboard on later bun feet, a similar demi-lune table & a 1930's oak table 50-80

809 Pair of late C19th mahogany framed bergere chairs by Maple & Co. for reupholstery 30-50

810 Late Victorian rosewood nursing chair & 2 other nursing chairs 70-100

811 2 C19th button back chairs one in green draylon and one in green pattern 50-100

812 2 C19th lathe back chairs & a rocking chair 30-60

813 George III mahogany & later carved corner chair 60-80

814 Beech framed, 12 panel mirror 25-45

815 Set of 6 mahogany Chippendale style dining chairs (5 & 1 carver) 150-200

816 Giltwood marble top occasional table & a giltwood mirror 50-70

817 Chinese red lacquered altar table with all over decoration & Greek key frieze, 127cmW 800-1000

818 C19th Italian walnut octagonal top table with parquetry & inlaid figural decoration on 4 scrolling legs 300-400

819 Chinese hardwood opium table 300-400

820 Chinese hardwood two tier plant stand, 84cmH 400-600

821 C19th French Kingwood parquetry crossbanded occasional table on slender cabriole legs, 40Wx54Lcm 700-800

822 Pair of Chinese hardwood circular top two tier occasional tables 80-120

823 C19th mahogany three division Canterbury 400-600



824 C18th style walnut veneered kneehole desk with 7 drawers around a central cupboard on bun feet, 90cmW 400-600

825 Chinese hardwood ebonised pedestal desk with 7 drawers on block legs 400-600



826 Late C19th walnut crossbanded cylinder bureau in the Louis XV taste with fitted interior & drawers on slender cabriole legs, 92cmW 800-1000



827 Chinese hardwood jardinière stand, the top with famille rose porcelain panel 800-1000



828 Chinese hardwood "throne" style armchair with turned and carved rails on block legs 600-800

829 Chinese hardwood opium table with carved frieze on scroll end supports 300-400

830 Pair of Regency rosewood tea tables on quadripartite base and 'C' scroll legs, 91cmW 2500-3000



831 Chinese hardwood throne chair with pomegranate & pineapple carved decoration 400-500



832 Pair of Edwardian mahogany floral marquetry inlaid open arm elbow chairs 400-600

833 Late C18th/early C19th oak low boy with 3 frieze drawers on tapering legs to pad feet, 81cmW 400-500



834 Chinese eight-fold papier mache & wooden screen with landscape, bird & figural decoration 600-800

835 Regency mahogany gilt metal mounted open bookcase cabinet with marble top over frieze & 2 shelves, 145cmW 1000-1200



836 Large Victorian walnut floral marquetry gilt metal mounted credenza of shaped outline on plinth base, 189cmW 1700-2000

837 Late C19th Gothic revival oak throne chair with quatrefoil and rosette carved decoration & Bishop's mitre finials 1000-1500

838 Pair of George III style wingback armchairs on claw & ball feet 100-150

839 C19th Kingwood & rosewood crossbanded card table in Louis XV taste with gilt metal mounts on slender cabriole legs 650-750

840 C18th style ebonised & gilt decorated, musical, long case clock in the Chinoiserie taste with gilded decoration 300-500



841 Early C19th yewwood veneer & walnut serpentine chest of four drawers on associated bun feet, 90cmW 2000-2500

842 Victorian style mahogany stool on cabriole legs 200-250

843 Pair of C19th walnut, gilt metal mounted hanging shelves of 4 graduated shelves, 97cm max. 1500-1800



844 Pair of ebonised & Zolnay porcelain stands, 102cm H 400-500



845 Pair of Transitional style Kingwood bedside tables with faux book shelf doors, on slender legs, 75Hx36Wcm 300-400

846 Pair of Eastern hardwood camel stools with leather seats 100-150

847 Victorian bamboo étagère, 103cmH 50-80

848 White painted and giltwood plinth with foliate & fluted column, 94cmH 300-400

849 Eastern brass tray top occasional table, the top with Egyptian style engraved decoration on a folding bamboo effect base, 80cm dia 100-150

850 Oak dresser above 2 drawers with plate rack over, 125Wx192Hcm 80-150

851 Early C20th mahogany cheval mirror in the Regency taste, 178cmH 100-150

852 Floral decorated firescreen 50-70

853 3 twin sets of vintage cinema seats in red draylon 100-150



854 Fine quality Edwardian satinwood floral marquetry inlaid two piece bedroom suite, comprising compactum wardrobe & mirror back dressing table, lock stamped Hobbs & Co. Provenance: reputed to be a wedding present to the vendor's grandfather (Wing Commander Mike Malton) from Princess Alexandra 800-1200

855 Set of 3 William IV rosewood bedroom chairs & a George III mahogany elbow chair (4) 100-120

856 Set of 5 Victorian mahogany dining chairs & another (6) 50-80

857 William IV mahogany card table with tapering support on shaped base, 89cmW 50-80

858 2 C19th mahogany circular top, tilt top tea tables 50-100

859 Georgian mahogany demi lune card table with banding, 92cm dia 150-250

PROPERTY NEWS

PILGRIM BOND
CHARTERED SURVEYORS
EQUESTRIAN & RURAL PROPERTY SPECIALISTS

WITH



(In addition to our Highworth and Shrivenham Offices)

COMBINING OUR PROPERTY SERVICES FOR YOU IN THE LAMBOURN VALLEY AREA

Now Offering All Property
and Estate Agency Services

CONTACT US

Craig Pilgrim • lambourn@pilgrimbond.co.uk • www.pilgrimbond.co.uk
Alastair Kidson-Trigg • shrivenham@kidsontrigg.co.uk • www.kidsontrigg.co.uk
01488 72911 • 5 Market Place, Lambourn RG17 8XU

OFFICE LOCATIONS • HIGHWORTH • SHRIVENHAM • LAMBOURN



COMING SOON

Prime residential re-development opportunity for 6 new dwellings

- Detailed planning consent for 6 new dwellings
- Over 4,000 sq ft of consented space
- For Sale by informal tender
- Offers invited by 5pm 16th May 2018
- Phase 1 and phase 2 contamination reports carried out and available
- No section 106 contributions and limited CIL obligation



FOR SALE

Liddington £575,000

A substantial and extensively refurbished 4 bedroom detached house with large gardens, link detached double garage and off-street parking. The property is edge of village, with views towards mature woodland and the Coombe beyond.



RECENTLY SOLD

Bourton £550,000

A substantial 4/5 bedroom detached house, extensively modernised and improved, secure gated off-street parking and in and out driveway, detached office/studio within the garden, good sized mainly lawn garden, newly installed garden shed. Annexe Potential.



RECENTLY LET

Upper Wanborough £1,800 pcm

A substantial and very attractive detached period farmhouse, with good size gardens, parking and generous terraced areas. Set in an elevated position in a highly sought after village with excellent links to the transport/road network and local amenities.



For your free market appraisal for sale or let,
development advice or probate valuations please
contact **Alastair Kidson-Trigg Bsc Hons (MRICS) RICS**
Registered Valuer in our Shrivenham office 01793 781937