

Kidson Trigg

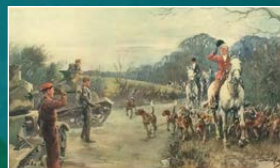
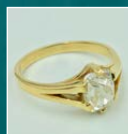
Estate Agents, Chartered Surveyors & Auctioneers

Auction

Tuesday 19th March 2019
at 10am

To include:

*Contents of several House Clearances,
Jewellery, Silver, Sporting, Vintage & Country
Clothing, Pictures, Furniture, Rugs, Interiors &
Home Furnishings, Collectors Items etc*



Lot 630
After Graham Sutherland,
signed Lithograph



SALE INFORMATION

ALL ABSENTEE PAYMENTS: by BANK transfer please

APPROXIMATE TIMINGS

(please mind the gaps)

TUESDAY 19TH MARCH

10.00am General Household, Collectables, China
(lots 1-275) (166 lots)

11.30am Books, Sporting & Countryside items,
Clothing & Vintage
(lots 295-450) (150 lots)

12.50pm Jewellery & Silver etc
(lots 451-598) (130 lots)

2.10pm Pictures (lots 601-672)

2.45pm Furniture (lots 681-775) (100 lots)

3.30pm Rugs (from lot 776 onwards) (25 lots)

Finish 4.15pm approx

VIEWING

| | |
|--------------------|------------------|
| Friday 15th March | 2.00pm - 5.00pm |
| Sunday 17th March | 9.00am - 12noon |
| Monday 18th March | 10.00am - 5.00pm |
| Tuesday 19th March | from 8.30am |

ENQUIRIES

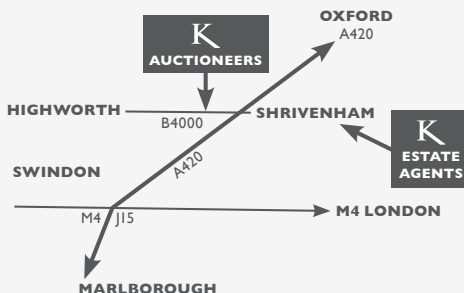
01793 861000 auctions@kidsontrigg.co.uk
www.kidsontrigg.co.uk

The Kidson-Trigg Auction Rooms & Friars Estate Office

Highworth, Swindon, Wiltshire SN6 7PZ
On the B4000 midway Shrivenham and Highworth



Lot 210
The old McIlroys
of Swindon
Art Deco Clock
(was above the
entrance)



SALE INFORMATION

COMMISSION/absentee bids can only be accepted by email (not by telephone) or via our homepage on our website, click "Leave us a bid" - there is no charge for this. The Auctioneers will gladly undertake absentee bids in confidence on behalf of those persons unable to attend the sale. All commission bids must be submitted **before 6 pm on the evening prior to the sale. Please telephone the office by Thursday evening at the latest for your results.**

TELEPHONE BIDS can only be accepted by email (not by telephone) Operates on certain lots only, and are at the discretion of the auctioneer, and must be agreed with the Auctioneers **before 6pm on the evening prior to the sale.**

CLEARANCE Porters are available on sale day and the day after to assist with goods. Purchasers must provide adequate assistance at other times and at all times for the removal of heavy and difficult objects. Please enquire at the office for transport companies.

MEASUREMENTS ARE IN CENTIMETRES unless otherwise stated

KEY TO TERMS: a/f = the lot is in the condition "as found" F&G = Framed & Glazed

BUYERS PREMIUM IS 20% PLUS VAT (= 24%)

ONLINE BIDDING: YOU CAN NOW BID ONLINE WITH NO COMMISSION. £3 FLAT FEE PER SALE
- www.easyliveauction.com

Tuesday 19th March at 10am

Please Note - Every lot illustrated and online bidding available for this sale via
www.easyliveauction.com

General, Household & Clearance

(no estimates)

- 1 C18th Black & white print 'Continental cloisters' 29x53cm & qty (9) of unframed prints, & as new 'Susie Cooper' Corinthian service
- 2 Oriental Cloisonne waisted vase with prunus & butterfly decoration to a blue ground (damaged)
- 3 Glass model of a fox 20L X 9H cm
- 4 General Clearance Lot: Georgian wall mirror (some restoration needed) 61x38cm
- 5 Oriental style vase & door curtain, LMC Watercolour river & church signed with initials lower right & another, & unframed hunting print after Sanderson Wells 20-30
- 6 General Clearance Lot: Modern 'rust' effect 5 branch chandelier
- 7 Fish Kettle
- 8 Qty of china
- 9 Babycham, Cherry 'B' & qty of other glasses
- 10 Glass flower bowl, paperweight, ashtray & lidded containers
- 11 Quantity of blue and white Chinese ginger jars
- 12 Collection of old cameras, binoculars, modern digital photo printer etc
- 13 WW II 'Police' steel helmet, copper kettle & copper jardiniere, brass camel & elephant, 3 pewter tankards etc
- 14 2 Capodimonte figures (1 with extensive repairs) & various other porcelain animals & figures
- 15 Collection of 'The Royal Papers' & 'The War Papers' in plastic folders (5)
- 16 Qty of well used Matchbox toys & 7 boxed 1960s girls albums, Diana, June, Girls World, Buntly & others
- 17 Collection of records (75,45 & 33) mainly from the 1960s
- 18 Assorted cameras, binoculars etc
- 19 Alflow water heater, car alarm unit, modern barometer & leather cased inclinometer, pair of drive exit mirrors
- 20 Quantity of general household china including ewer & basin, figurines, vases, pressed glass & other items
- 21 PG Tips official World Cup Mugs (2), 3 Guinness mugs & 4 miniature bottles, 3 Grommit mugs
- 22 5 Mantle clocks with wooden cases, 7 carriage & other small clocks (all in need of restoration)
- 23 Bavarian wall clock, modern wall clock, marble mantle clock, modern mantle clock
- 24 Assorted Vintage games including Totopoly 1950s Monopoly, cribbage boards, plastic model, Reeves oil painting set, qty of bump & go plastic cars ETC
- 25 Pair of decanters, EPNS flatware, canteen of cutlery, various china, cutlery & other items
- 26 Qty of head scarves, 5 assorted evening bags, & wallets
- 27 2 1950s suitcases, 1960 Prestige kitchen tool set (boxed) large selection of tins & boxes, vintage Christmas tree lights & bulbs, decorated wall mounted half ostrich egg
- 28 Quantity of of Asian & European brass, copper & metal ware, brass coaching horn
- 29 5 Various models of horses
- 30 3 Vintage brass 'bulb' car horns (some worn)
- 31 Brass ware: Peacock tail rifle screen, 2 cannons, large brass tray, horse brasses, shire horses pulling a wagon and another with cannon
- 32 Cased calligraphy set, 4 paper weights, brass marine muster box & boxed brass compass
- 33 2 Hard back albums of classical 75 records mainly His Masters Voice
- 34 Brass scales, brass trivet & pair of binoculars (damaged)
- 35 Wooden coopered bowl, 2 papier mache leather racks, gong with wall mounting, set of EPNS tea knives, Pratt ware pot (base damaged)

- 36** Ladies navy fitted pre-war coat made by Harrods (small moth holes) & ladies Harrods open toed sandals, Oak framed red covered carver, selection of Wedgewood, Charlton & Poole pottery etc
- 37** 8 Track stereo player & 15 cartridges including Abba Wings
- 38** The game of Wembley made by Ariel, top team collection of football stickers, FA cup centenary commemorative coins & booklet, 2 albums of stamps, Sun football encyclopaedia with stickers & 3 autograph books with many Speedway Riders autographs (1970s)
- 39** Large pair of fire dogs

Large Collectables

- 101** Beaufort Hunt tray & a 2 handled carved wooden inlaid tray & a miniature cider jar
10-30
- 102** 14 Audiographic rolls
- 103** Oman unmarked white metal Jambiya in white metal filigree sheath
100-200
- 104** Tapestry depicting scene of a naive lady sitting on a bench 168 X 188 cm
- 105** 2 large bean bags
10-20
- 106** Dog bed and 2 dog crates
10-30
- 107** Late C19th Chinese carved ivory card case with 2 reversible panels, exposing erotic scenes (crack to the interior on 1 side) 300-400
- 108** Pair of decorative, grey painted wall lights
40-80
- 109** punch bag & medicine ball
20-40
- 110** Case of 12 bottles of Arron Founders reserve whisky
400-800
- 111** Quantity of brassware including trays, fire irons etc
30-60
- 112** Rosewood and brass bound writing slope with fitted interior
30-60
- 113** 2 early C20th Chinese carved ivory balls (1 damaged)
20-40
- 114** Umbrella stand in the form of an Elephants foot
- 115** Two terracotta garden pots
- 116** Pair of C19th Terracotta glazed lions
200-250
- 117** 2 Victorian candle wall mounts with Lion mask
- 118** French pewter royal oval shape plate depicting embossed dragon and fauna
50-80

- 119** 2 Edwardian cast metal fox hounds



- 120** Plaster face of a Pig, with painted name Fergie to top of mounted shield



- 121** Victorian cast iron trellis
50-100
- 122** "Orrs palette" wooden board
- 123** Lejeune mascot of a hippo
70-100
- 124** Small roulette wheel by Hamleys, 59 Knightsbridge, London
20-50
- 125** 2 X Binoculars, a cased pair of Zeiss 8 x 30B & another pair
30-60
- 126** 1950s Piglet
- 127** 1960s Paddington bear
30-60



- 128** Bronze Artisan figure of a man 80cm
1200-1300
- 129** Bronze bust of a lady, Grecian style 50cm
1500-1800



130 Brass & glass mantle clock 33cm 350-450

131 Pair of red canisters, featuring Coats of Arms style decoration 37cm 75-100



132 Large pair of blue & white Chinese style bottle neck vases 60cm 100-200

133 Painted wooden Buddha 45cm 30-50



134 Pair of red Tolware cannisters, depicting Coats of Arms 44cm 75-100

135 Pair of blue & white bottle neck Chinese style vases 45cm 100-200



136 Interesting selection of 12 tribal and other carved Masks 30cm 1200-1300



137 Decorative marble & gilded style snake centrepiece 32cm 100-200

138 3 Wooden carved oriental style figures of elders 32cm 50-100

139 Pair of Classical style bronze urns, with embossed figures of warriors and maidens 32cm 500-600



140 19 Pestle & Mortar & 1 paperweight 400-600



141 Oak framed rectangular mirror 10-20

142 Rectangular bevelled wall mirror, with metallic grey decorative frame (78x110cm) & another wooden framed wall mirror, similar size 30-60

143 Bronze Buddha 25cm 200-300



144 Cloisonne bronze pot, with finial in the form of mythical creature, and cloisonne inset panels 20cm 100-200



- 145** Green lidded censer, with handles in the form of mythical creatures 13cm 40-60



- 146** Wooden box in the form of a cottage 22cm 75-95

- 147** Inkwell, with marble base, and brass pots either side of a central cherub figure playing a flute 20cm 250-350

- 148** Blue John ball (large) 7cm 20-40

- 149** Blue John ball (small) 5cm 20-40

- 150** Bronze of a recumbent dog, on a bronze base with embossed relief of running hounds and with stamp mark and signature to side 15cm 650-750



- 151** Carriage clock, with decoration to side panels depicting cherubs 6cm 120-150

- 152** Decorative ruby glass and silver style decanter in the form of a Fish, with cork to mouth 13cm 100-200

- 153** Pair of Classical style mottled green marble urns, heavily gilded decoration on the finials and bases 32cm 250-350

- 154** Moss green vase, with ribbed style bottle neck to bulbous base 23cm 50-80

- 155** Chinese table screen, the central ceramic panel depicting figures on a lake, with fauna 38cm 80-100

- 156** Chinese vase with cockerel 27cm 100-200

- 157** Small blue double gourd vase 17cm 50-80

- 158** Pair of twin branch brass candelabra, with central cherub figurines 30cm 500-600



- 159** Bronze woman water carrier, on red marble style plinth 19cm 100-200

- 160** Cold painted bronze of a servant carrying a tray 10cm 50-80

- 161** Cold painted bronze depicting man wearing Turban and robes, sitting on a rug with a pipe 6cm 50-80

- 162** Decorative yellow and metal decanter in the form of a monkey 21 cm 100-200

- 163** Bronze statue of Mercury 88cm 400-500



- 164** Pair of lamps 700-800


- 165** Cold painted figure depicting seated boy 7cm 120-150

- 166** Decorative Brandy warmer, mounted on a pair of skis to base 16cm 20-40

- 167** Red ceramic vase 43cm 100-200

- 168** Bronze bust of a Grecian style lady, with fauna to her head dress 59cm 1500-1800



- 169** Porcelain plaque depicting classical scene of lady and man in period dress with hound, mounted in carved wooden frame 29cm
200-300
- 170** Glass and metal decorative chandelier
100-200
- 171** Chandelier 65cm
30-50
- 172** Pair of decorative glass bead wall lights 47cm
100-200
- 173** 3 glass and metal wall lights 35cm
75-95
- 174** Pair of wall lights 44cm
75-95
- 175** Glass ormolu lamp, in the form of a classical urn, with decorative scrolling handles and plinth 60cm
150-200
- 
- 176** Horstmann 'Newbridge' timing mechanism, selection of cigarette & tobacco tins containing coins, qty of black & white Victorian glass photo slides
30-50
- 177** WW I leather cased brass prismatic compass, brass map viewer & miniature compass, binoculars, telescope, cameras & calculator, Olympus Omio camera, Tamron 80-120 adaptal contra flash & Zeiss Ikon projector, reel to reel projector, Goro slide viewer
50-80
- 178** 1895 Stamp album (stamps removed), 2 autograph books, 2 x leather bound Victorian photo albums
30-50
- 179** Victorian hand painted truncheon possibly Irish
50-80
- 180** 1 Pelham (noddy) puppet, 1 Mr Turnip puppet, selection of toy cars, large Pedigree doll & various other toys
30-50
- 181** Set of 4 C19th French ornate gilded brass wall mirrors each with triple branch electric lights (converted from candlesticks) fine quality with bevelled mirrors
300-500
- 182** Case of 3 graduated pairs of scissors (Victorian), cased cut throat razor & RFC enamelled car badge
20-30
- 183** 1960s Cased Mahjong set together with 2 Chinese figures, 2 Chinese pith paintings of insects
30-50
- 184** Pair of white marble & gilt lamps & pair of tall (40cm) glass candle sticks
20-30
- 185** Wooden tray, various white metal items & glass & porcelain
50-80
- 186** Large copper Italian brocca, and a decorative yellow ground modern oriental jar with cover (brocca from Zagarola, near Palestrina)
30-50
- 187** Ostrich egg on a stand
20-30
- 188** Singer sewing machine, flat iron, miniature table, cameras, stamps, beer mats, small rug & other collectables
- 189** Small wheeled 1970s push along pony & 1970s doll
- 190** Oak banjo barometer & a brass bound wooden salad bowl with a pair of servers
40-60
- 191** C19th cast iron stick stand 45 X 71 cm H
70-90
- 192** Edwardian inlaid walnut tray 59 X 40cm
70-90
- 193** Edwardian inlaid walnut oval tray 64 X 41.5cm
70-90
- 194** After PJ Mene, a large bronze, group of 2 Bloodhounds chasing a Rabbit 'On The Scent' 91 X 43 X 33cm H
400-600
- 195** Pair of steel & brass fire dogs & pair of polished steel, brass & iron
40-60
- 196** 2 Square wedding cake bases 35 X 35cm, 1 silver colour, the other white with silver decoration complete with knives, cased.
40-80
- 197** Brass bowl, copper jardiniere & brass & glazed ceiling lantern
20-30
- 198** Mid C19th Art Nouveau copper plaque signed A Husson & early C19th copper plaque decorated with a girl feeding birds, originally a book cover signed Gustav Grobe
60-100
- 199** Pair of brass wall hanging mirrors flanked with double candelabras to base
30-50
- 200** 100s of first day covers & other covers from GB, USA, France & a number of other countries from 1910-1970s
50-80
- 201** Chromed model of Rolls Royce car mascot 'Spirit of Ecstasy'
200-400
- 202** WW II special constable medal to John Archibold & collection of commemorative coins & other currency
40-60
- 203** Small whole world collection of stamps
30-60

- 204** William IV bracket clock in carved & shaped mahogany case, the white painted dial with roman numerals by James Mackie London surmounted by gilt metal crest 51 h cm
800-1200



- 205** Early Victorian writing slope made by Pearce of London, fully fitted with a 3 drawer secret compartment. In beautiful condition with chased brass fitting, black cartouche and lined in coromandel. The outside is possible burr walnut or pollard oak 200-400
- 206** Velum suitcase 30-40
- 207** Vintage China Doll 20-40
- 208** Ham hock holder 10-20
- 210** Large Art Deco electric clock, makers mark to central dial 'Gibson', with black numerals to face, 112cm square, 47cm depth. Provenance: From the old Mcilroys building Swindon 300-500
- 213** Quantity of copper & brass items etc
- 214** Quantity of lamps, shades etc
- 215** Quantity of boxes - decorative, wooden, metal, cased fish knives etc
- 216** Quantity of tapestries, frames, wool etc
- 217** TV, screen, DVD player (working in the vendors house, but KT can't guarantee in working order)
- 219** Brass chandelier 5 light with a gradoon baluster stem with 5 scrolling branches, fitted for electricity 50-100
- 220** Wood and brass bound bucket with leather handle, 30cm H 100-200



- 221** Wood and brass bound bucket with brass handle, 26cm H
- 222** 3 Pairs of bespoke curtains, brown with flowers & stripes on the sides. Size 2 pairs 210 L X 200 W cm, 1 pair 210 L X 340 W cm
- 223** Mixed lot of collectables including pen nibs, watches, silver plate, flatware etc 30-60
- 224** 2 Pairs of very good quality lined & interlined Toile De Jouy with cream ground with pink & white scenes (£4000 new) 252 X 191cm with 1 curtain pole 200-400
- 226** Qty of thimbles
- 227** C19th Mahogany banjo barometer, James Gatty High Holborn 1850-250
- 228** C19/250th Oak cased banjo barometer 80-150
- 229** Pair of cast silver grouse 400-500
- 241** Collection of commemorative coins to include England world cup 1977 issued by Esso, historic cars full set, British penny's 1901-36, Esso collection of football club badges & other coins & commemorative stamps 80-120
- 242** C19th Masons iron stone serving platter & pair of C19th Staffordshire blue & white ironstone meat platters by Hicks, Meigh & Johnson 20-30
- 243** 2 Sets of 6 matching Belleek porcelain cups & saucers 60-80
- 244** Small collection of Belleek porcelain jug, plates etc 20-30
- 245** Quantity of china and glassware including 2 Japanese tea services, part New Hampshire dinner service, Italian porcelain figure of a pianist & suitor, selection of Waterford glasses 40-60
- 246** 2 Volumes locomotive philatelica completed with mint magazines: steam alive series 1-12, modern railways stamps 1964+, trains illustrated 1950/60. The railway magazine 1951+ 20-30
- 247** 2 Framed & glazed indentures, 1 dated 1734 & the other 1827 20-30
- 248** Agate jambiya (crack in handle) & 2 brass sheathed jambiya one with a stained bone handle the other with wood (3) 60-120
- 249** Marble & ormolu clock (missing pendulum) by Ernest Levi of Paris, & mechanism for a miniature long case 20-30

China

- 250** Delicately carved soap stone double vase decorated with animals & branches, antique soapstone double vase decorated with leaves & flowers 30-50
- 251** Copeland Spode England dinner service
- 252** Pair of de Gournay hand-turned and hand-painted polychrome & gilt massive Chinese porcelain chargers in a contemporary pattern of flowers and foliage, forming part of a former de Gournay design proposal for a Russian client commission, 51cm diam (chip to rim)
- 253** Contemporary green planter & blue glazed dish painted to sides with plated rim depicting horses & chariots 10-20
- 254** Quantity of Worcester Evesham pattern dinner wares 20-60
- 255** Pair of Oriental chargers, with Famille Verte central pattern, and blue and white scrolling design to rim 44 x 44cm 100-200
- 256** 6 Chinese saucers, with various patterns and designs 13 x 13cm 30-50
- 257** 6 Chinese saucers, varying designs 13 x 13cm 30-50
- 258** 3 Ceramic Beswick figures, an elephant, Lion & Cougar 50-80



- 259** Collection of Beswick & other models of dogs 50-80
- 260** Beswick Black Beauty & foal, on wooden plinth 20-30
- 261** Crown Devon dinner service & coffee set, Marlborough tea service, Denby 1960 coffee set, Beswick horse, Sylvac jug & various other china items 40-60
- 262** Pair of mid C19th Minton nut dishes in white, mounted with red squirrels 80-120
- 263** 2 Imari ginger jars (missing lids), pair of Chinese pickle dishes & pair of Chinese baluster vases 20-30
- 264** Mixed selection of Chinese & European C17/18th porcelain 50-80
- 265** Murano glass: Deer, Cockerel & Rabbit vase 40-80

- 266** Samurai 6 piece tea service (broken lid on cream jug) 20-30
- 267** 2 Crown Derby floral pin trays, 5 Crown Derby animals, Pig Birds, Walrus, Kingfisher & brace of partridges) 25-50
- 268** Coronet ware preserve bowl with silver lid & white metal spoon in the style of Clarise Cliff 40-80
- 269** Royal Worcester pot pouri and cover, with hand painted fruit study signed G Banks; no. 162 to base and a pair of Coalport candlesticks, hand painted by Malcolm Harnett, and a Coalport urn and cover, hand painted by Joseph Mottram 100-200



- 270** Large blue & white Kelmscott jug (riveted repairs) Blue & white baluster oriental vase, Japanese blue & white bowl (damaged), Minton blue & white bowl, set of Crown Derby coffee cups, Beatrix Potter figures 40-80
- 271** Pair of Fairings dogs 20-30
- 272** Quantity of various jugs, bowls, incl Royal Stanley, lustre, blush etc etc
- 273** Decorative glass candle holders, pair ruby colour lustre vases, large cut glass fruit bowl, quantity of coloured and other various glassware items
- 274** Staffordshire flat backs, converted to lamp bases, with shade, and other figurines and ornaments
- 275** Quantity of general cabinet china, decorative china, poll boxes, Fairings, Spode, Coalport, miniature Wedgwood, etc etc
- 276** Quantity of Royal Worcester & Portmeireon 40-80
- 277** C19th Porcelain figure of a milkmaid Meissen cross swords mark to base 15cm H 80-120
- 278** Meissen blue & white oval dish with pierced border 24cm L 40-60
- 279** C18/19th Blue & white bowl decorated in the oriental palette & 2 other oriental blue & white bowls 80-150

Sporting, Clothing, Books

- 286** Pair of Gieves & Hawkes gents black Oxford brogues size 10 50-100
- 287** Brand new Musto safari jacket XL
- 288** Ralph Lauren polo safari jacket XL
- 289** John G Hardy gents Tweed hacking jacket 42R
- 290** 1950s Dunn & Co woollen over coat with raglan sleeves
- 292** 10 Victorian saddle & bridle racks 100-200
- 293** C19th Russian linen dress
- 294** C19th Russian linen dress, in neutral colour
- 295** Large silver cigar box London 1921 800-900
- 296** Georgian fox head stirrup cup 1200-1300
- 297** Heavy guage silver fox with pheasants on lid 400-600
- 298** Silver model of a fox Birmingham 1966 500-600



- 300** Silver model of a pig import mark London 1910 1500-2000

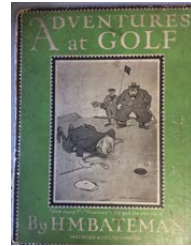


- 301** 1st Edition Lionel Edwards 'Reminiscences of a sporting artist'
- 302** 1st Edition 'The Horse' 1888
- 303** 1st Edition 'Tally Ho' & 'In and out pigskin'
- 304** 1st Edition 'The Pilgrims Progress' 1889 by John Bunyan
- 305** 1893 'Lost In Africa' by FH Winder & 'The African Explorer' by H M Stanley 50-80

- 306** 'Legends Of Vancouver' by E Pauline Johnson

- 307** Boxes of assorted books, old maps etc

- 308** Selection of various books including bound copies (2) of 'The Popular Educational ' & 1923 Batemans 'Adventures at Golf' 30-50



- 309** 'Thy Servant a Dog' told by Boots- edited by Rudyard Kipling 1930 November reprint by MacMillan & Co, original blue leather binding showing slight wear, light foxing, inscription & book plate. With original box & Boots bookmark 30-50



- 310** Rudyard Kipling 32 red leather bound volumes of his work published by MacMillan & Co, spine bindings very worn on some volumes, 1 blue bound volume 'Songs From Books' 30-50
- 311** Charles Dibben 1841 'Sea Songs', James A Jones 1935 'The Romance of Londons Rivers' 30-50
- 312** The Mikado (1928) with illustration by Russell Flint, published by MacMillan - with dust cover & Lewis Carroll 'Alices Adventures in wonderland' illustrated by Gwynedd M Hudson 30-50

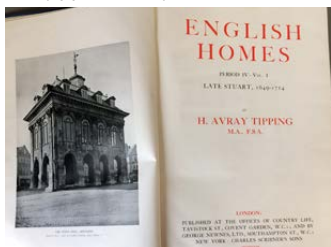


- 313** Qty of novels, reference & poetry books 40-80

- 314** Collection of C20/19th childrens book, including 'Les Animaux en Pique-nique', 'Wally pug at play,, 'New Cautionary Tales' (1st edition), 'Nursery Nonsense', 'The Bad Childrens ook of Beasts' 7 a number of others & Peter Rabbits race game 50-100



- 315** English Homes vol 1 & 2 by H Avray Tipping, 1929 reprint of the 1920 edition; Mrs Beetons 'Household Management' new edition (approx 1937) 20-30



- 316** Antler handled shoe horn silver mounted 300-400

- 317** Silver horseshoe & jockey clock trophy 'Goodwood 21st May 1987' 500-700

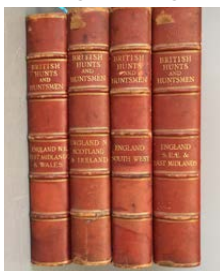
- 318** Silver golf club post rack 400-600

- 319** Curling stone paperweight 100-200

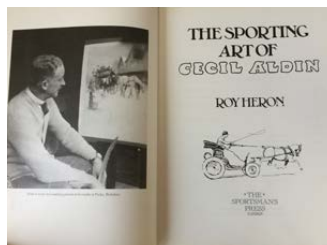
- 320** Horseshoe clock in gilt metal 300-400

- 321** NEILS HEIBERG 'White Ear & Peter' 1st edition London 1912 Macmillan & Co bound in burgundy cloth & gilt lettering & design to cover & spine 16 colour plates by Cecil Aldin 60-80

- 322** British hunt & huntsman 4 volumes, published London 1908 by Biographical Press bound in half red calf with gilt lettering 100-200



- 323** Cecil Aldin 'Dogs of Character' published Eyre & Spottiswood London 1927, 'Wheres Master' by Caesar 6th edition published Hodder & Stoughton 1910, Roy heron 'The Sporting Art of Cecil Aldin' & Peter Beckford 'Thoughts on Hunting' illustrated by G Denholm Armour (4) 40-60



- 324** E D CUMING 'British Sport Past & Present' illustrated by G Denholm Armour published Hodder & Stoughton London 1909 bound in half red calf & gilt lettering & qty of books to include 'Wild Chorus' by Peter Scott & Thady Ryan 'Mr Privileged Life' (10)

- 325** Rowland Wards records of big game 8th edition 1922 with original dust cover, & practical instructions for cleaning mounted heads, sporting trophies etc 150-250

- 326** 'Reminiscences of an old Sportsman' by W B Woodgate published Eveleigh Nash 1909 40-80

- 327** Large silver plated model of a stag 150-250



- 328** Victorian silver plated pheasant spoon warmer 400-600

- 329** Pierced silver model of a wheelbarrow 800-1000



- 330** Pair of Victorian silver plated owl candlesticks 500-700
- 331** Silver horse shoe letter clip 250-350
- 332** Silver model of a fighting cockerel 350-450
- 333** Irish silver model of a hound 400-600
- 334** Victorian silver horses head cane with a vesta inside 2000-3000
- 335** Cast silver model of a spaniel 700-900
- 336** Silver plated whip handle sugar & cream 150-200



- 337** Silver fox cork screw 200-300
- 338** Silver & yellow enamel jockey cap fob watch & enamel chain in original box 1500-1800
- 339** silver model of a duck Sheffield 2010 450-550
- 340** Silver plated jockey cap inkwell 200-300
- 341** Unmarked silver model of a whippet early C20th 800-1000
- 342** Pair of silver mounted deer hoof candlesticks 500-600



- 343** Elephants foot silver mounted Tantalus with cigarette box on castors 2000-3000



- 344** Silver mounted Hippo foot inkwell 600-800

- 345** Continental silver model of a bull & cow assay scrape & unidentified mark 3000-4000
- 346** 2 Old leather suitcases & small leather attache case 40-60
- 347** Swaine & Adeney brown hand bag, label missing
- 348** Rare Hilfiger red label leather jacket size M
- 351** African Ibex horns 30-60
- 352** Six straw hats, ladies 20-40
- 353** Horse measuring stick
- 354** ROS Solaros 9 x 35 binoculars
- 355** ROS Solaros 12 x 40 binoculars 50-100
- 356** 2 Victorian brass fox mask door stops 50-100



- 357** Victorian crystal saddle hip flask 100-150



- 358** Navy silver plate flask, James Dixon 60-80
- 359** Fox mask walking cane
- 360** Victorian fox hound door knocker 60-90



- 361** Silver plated hunting flask 120-150

- 362** Italian silver gilt model of a racehorse (Golden Horse) 1500-2000



- 363** Fishing rod & reel, R Chapman split cane pike rod 100-150

- 364** Tanner Krolle handbag, dark chocolate brown colour ladies' shoulder bag, some marks & indentations to leather, 36cmW, 31cm at widest point to base, 24cm wide at narrowest point at top of bag 100-200

- 365** Tanner Krolle taupe colour ladies' handbag/ shoulder bag, some marks & indentations to leather; 36cm long x 31cm at widest point to base, 24cm wide at narrowest point at top of bag 100-200

- 366** Savile Row tailored tweed mens jacket size 42 reg 30-60

- 367** Timberland gents leather shooting coat size XL 20-30

- 369** Locke & Co Hatters St James Street London, brown Trilby size 7 1/4 with box

- 370** Ralph Polo Lauren lambs leather gents jacket size XL 30-70

- 371** 1950s Horse hide gents jacket size XL 30-60

- 372** Holland & Holland ladies safari jacket size 12 30-60

- 373** Ladies tweed jacket size 14 by Mansfield Clothes London

- 374** Bladen tweed jacket gents size 50R 40-80

- 375** 1970s French green shooting coat (Togs Unlimited) size XXL 30-60

- 376** Barbour gillet size XXL (Fleece)

- 377** Orvis gillet size XL

- 378** Puffa jacket size XL

- 379** Lambourne green gents waistcoat size 46

- 380** Ladies outfit by Cacheton size M skirt size 14

- 381** Handmade Locke & Co Fedora trilby size 7 3/8



- 382** Georgian silver buttons with fox engraving on a Yellow hunting waistcoat, made by Bernard Weatherill

- 383** Gents black hunt coat, Bernard Weatherill, Savile Row, London, Fernie hunt buttons

- 384** Gents Bedford cord Breeches, Bernard Weatherill, made by Mr Quinn

- 385** Christys, London, brown trilby & black hunting bowler, S Patey (London)

- 386** S Patey (London) black hunting top hat



- 387** S Patey (London) black hunting top hat

- 388** Pair of gents black hunting boots (size approx 10-11)

- 389** Pair of gents black & mahogany top hunting boots (size 10 1/2 - 11) with trees & white straps



- 391** Roderick Charles covert coat

- 392** Gents buff colour jodhpurs by Moss 'Bros, qty of various spurs, leathers, boot pulls, Maxwell jockey lifts & qty of gloves



- 393** 6 hunt bttons (possibly American) with embossed fox masks, stamped to back

- 394** Aigle boots size L

- 395** Antony Hewitt suit Savile row 80-150

- 396** Longhi Shooting coat long 41

397 Cheaney churchs shoes with trees size 8



398 Riding breeches, Riding trousers Harold H Birr

399 Mens jacket Supasax Bladen 42L



400 Ladies trousers Roxton size 18

402 Puffa coat, Waxed coat country style XL,
Pikeur winter coat & Nike rugby coat size XXL

406 Gents black hunting coat

407 Ladies navy hunting coat Bernard Weatherill

408 Breeches, Denhan & Goddard Ltd

409 Holland & Holland shooting style coat XL
50-100



410 Holland & Holland brown linen coat size M
50-100



411 Holland & Holland mackintosh with removable
wool lining size M & a similar khaki one size L
40-80

412 Holland & Holland tweed shooting coat size XS
60-120



413 Highrove 'snowsled' green shooting coat with
fleece lining size L 40-80

414 Green lightweight utility coat by Fjall Raven &
khaki green top & gortex black jacket, green
top & sleeveless Husky style coat by Jack
Murphy (5) 30-60

415 John Partridge green shooting coat with
brown corduroy collar & another green coat by
Kenneth Gordon & a khaki coat 30-60

416 4 piece green tweed suit, by Gerald Freedman
Old Compton Street; tweed jacket 40-80

417 Gieves & Hawkes wool suit 30-60

418 Holland & Holland ladies wool & cashmere
trousers size 10 & a pair of gents trousers
20-40

419 Qty of hats including Holland & Holland, clay
shooting, Royal Berkshire shoot, brown Herbert
Johnson trillby 30-50

420 3 Pairs of gents good quality leather lace up
boots 30-60

421 3 Pairs of gents good quality brown leather
boots 30-60

422 5 Pairs of gents leather & other golfing shoes
30-60

423 Gents brown leather lace up shoes retailed
by Holland & Holland & another pair of gents
brown lace up shoes 30-60

424 3 Gun slips 30-60

425 Canvas & Leather game bag & another leather
& canvas cartridge bag stamped Land Rover &
a leather loadmaster cartridge holder 50-100

427 Villeroy & Boch 6 place canteen of flatware
plated cutlery, plated pair of candlesticks
30-50

428 Basket containing old cricket bats, tennis
rackets etc 25-40

429 Ankle height brown riding boots (45612) Size
11 E fitting 30-50

- 430** Cased pair of Lonsdale boxing gloves , signed to Buffy by Chris Eubank in 2002 (being sold to raise funds for a mobility scooter for Peter Lewis aged 18) 150-250



- 431** Early C20th replica blunderbuss with 10 inch steel barrel & flintlock action 50-150

- 432** Brass Embossed powder flask stamped G & JW Hawksley 30-70

- 433** C19th Spanish flintlock pistol dated 184710 1/2 inch barrel indistinctly engraved with En Eilar, Pore Manuel -----?? 150-250

- 434** Taxidermy mounted Tigers head by Van Ingen (the ear is chewed) 500-800



- 435** Taxidermy fox now as a stick stand 50-80



- 436** Taxidermy cased fox & cock pheasant in naturalistic setting by Ecutt & Crabtree 150-300



- 437** Stuffed figure of Fox in red coat, britches & boots 30-50



- 438** Taxidermy Ibex head & neck 150-200



- 439** Taxidermy of a buffalo head 300-500



- 440** Pair of Ladies brown Butcher boots with trees 40-60

- 441** Hardy split cane fly rods (2) 'The Tournament' 9ft Palakona & 'The Houghton' 10ft 30-50

- 442** Hardy salmon rods (2) 'The no3 Ahe Wood' steel centre 11ft 6ins & 'The Gold Medal' steel centre 14ft 40-60

- 443** Horn handled hallmarked silver topped walking stick, cane walking stick, lunging whip, leather riding whip& 2 leather saddles & Pelham bit 40-60

- 444** box containing placemats & oval nightlight lampshade decorated with hunting scenes 15-25



Specialist Auctions

THIS SPRING

APRIL

- Specialist Asian Auction
- Specialist Jewellery & Watches Auction



Sold for
£27,000
in Nov 2018



Sold for
£3,500
in Dec 2018



Sold for
£43,000
in Sept 2018



Sold for
£6,000
in Nov 2018

MAY

- Specialist Musical Instruments
- Important Specialist Picture Auction



Sold for
£800
in Oct 2018



Sold for
£17,000

ALREADY CONSIGNED FOR MAY:



**Cornelis
de Heem**
(1631 - 1695)

Est. £10,000-£15,000



**Frans
Snyders**
(1579 - 1657)

Est. £60,000-£100,000

YOU ARE INVITED

to our

SUNDAY VALUATIONS



17th MARCH • 14th APRIL • 12th MAY

OR OTHER TIMES AVAILABLE BY APPOINTMENT 01793 861000

*sell your
jewellery
& antiques*

WITH CONFIDENCE

WHY SELL WITH US?

- Specialist Professional Valuers
- Global Internet Bidding – regularly selling to Beijing, New York, Paris
- No-obligation, discreet, free valuations of items you are considering selling



Alastair
Kidson-Trigg



Pippa
Kidson-Trigg



Jim
Bischoff



Steve
Ferguson

OUR SPECIALIST VALUERS CAN HELP WITH:

jewellery, silver, watches, clocks, medals, sporting, militaria, vintage clothing, coins, ceramics, stamps, toys, railwayana, collectors items, paintings, rugs, furniture, home furnishings

- 485** Vintage blister pearl necklace with 14 graduated Cabochon Citrines of 30cts with 9ct yellow gold clasp 350-450
- 486** 18ct Yellow gold 5 stone diamond ring of 60 pints, clarity VS, colour G size M 700-800
- 487** Silver & enamel Tiffany style easel back picture frame 120-150



- 488** 18ct White gold, opal & diamond ring the central opal approx 3.5ct size N 2400-2500
- 489** Pair of silver horseshoe shaped cufflinks 40-60
- 490** 14ct White gold diamond set daisy style cluster ring approx 1.6cts size Q 750-850
- 491** 18ct Yellow gold diamond full eternity ring approx 2cts size N 1500-1600
- 492** 14ct White gold single stone diamond pendant necklace approx 1/2ct 480-580
- 493** Silver bangle with semi precious stones 95-130



- 494** Silver & Plique A Jour dragon fly brooch 65-85



- 495** 14ct White gold graduated diamond pendant necklace 400-500

- 496** Substantial silver & turquoise necklace with matching earrings 140-240



- 497** 14ct White gold diamond bracelet made up of 46 panels total weight 2cts 1200-1300
- 498** Pair of silver & enamel masonic style cufflinks 40-60
- 499** Large silver vesta case with embossed decoration 75-95
- 500** Silver & marcasite snake bangle with ruby eyes 90-130



- 501** silver figure of an owl with glass eyes 48-58
- 502** Freshwater pearls with 9ct yellow gold clasp 100-200
- 503** Silver Plique A Jour pendant/brooch in the form of a parrot 40-60
- 504** Pair of white gold Chopard style heart shaped diamond earrings 220-250
- 505** Silver & marcasite pincushion in the form of a hedgehog 40-60
- 506** Pair of vintage silver & cubic zirconia drop earrings 50-80
- 507** 18ct Yellow gold diamond princess cut cluster ring of 25 points size L 400-600
- 508** Silver bear & silver thimble depicting cats 50-80
- 509** Pair of freshwater pearl stud earrings on 9ct yellow gold posts 50-80
- 510** Silver cubic zirconia & emerald Art Deco style ring size O 90-130



- 511** 18ct Emerald & diamond 3 stone ring size N
350-450
- 512** 14ct Yellow gold ruby & diamond ring approx
1.2cts size P 550-650
- 513** 14ct Yellow gold tourmaline & diamond ring
size M 1/2 300-400
- 514** 18ct White gold 5 stone diamond ring approx
3cts size M 1/2 2900-3900
- 515** 18ct Yellow gold diamond cluster ring 3/4 ct
size K 580-680



- 516** Pair of 9ct gold oval double backed cufflinks &
stock pin 60-80
- 517** Zeno stainless steel gentlemen s wristwatch
with automatic movement & exhibition back,
with Ferrai logo at 12, black face with white
Arabic markers, working & serviced 400-600



- 518** Belle Epoque opal, ruby & enamel drop
pendant necklace on yellow metal chain link
necklace, central white enamel knots design
with 3 round cabochon opals with 2 drop oval
opal cabochon with ruby accents & enamel
flowers, in a fitted case 1500-2500
- 519** Pair of late C19th early C20th 'Kayserzinn' Art
Nouveau bronze Dachshund knife rests 50-80



- 520** Victorian silver grape scissors 30-50
- 521** White metal & silver plated items 20-30
- 522** White metal, silver & silver plated items
including Mappin & Webb tankard from
Frascati restaurant 20-30

- 523** Leather jewellery box containing costume
jewellery & 3 1950s Parker pens, plated
flatware, silver pie slice, 2 clocks & barometer
30-50
- 524** French repeater brass & glass cased carriage
clock 60-80
- 525** Jewellery bow containing 8 ladies watches, 4
pill boxes & powder compact 20-30
- 526** Argentinian gaucho boot knife in white metal
with gilt inlay 20-30
- 527** Silver sugar tongs, salt bowl & spoon, EPNS
sugar tongs & miners lamp & brass trivet 20-50
- 528** Octagonal ivory mounted Swiss made 8 day
travelling clock engraved verso' love from phil
may 1929' (crack to ivory) 30-50
- 529** C20th Swiss made tortoiseshell mounted
combined clock, barometer & thermometer by
Hermes, Paris 19L X 10H cm 300-500



- 530** 2 Sheffield plate trays, 1 by Elkington & Co,
2nd with pierced gallery & 3pc silver plated tea
set, tea strainer & stand 40-60
- 531** 3 Silver bladed butter knives with mother
of pearl handles, & 5 Georgian teaspoons &
dessert spoon with later fruit & vine decoration
6.6 oz gross 40-60
- 532** Elkington & Co silver plated food warmer &
silver plated & pierced fruit bowl with swing
handle on footed base & German pewter dish
30-50
- 533** Sterling silver ladies pocket open faced key
wind watch, silvered engraved face with
Roman numeral markers case marked 935 (no
key) 60-80
- 534** 9ct Rose gold & opal ring, central oval
cabouchon opal 12 X 8mm 4.1g size Q 80-120
- 535** 800 Silver Swiss import marks ladies open
faced pocket watch, key wind, with white
enamel face, Roman numeral markers 50-80
- 536** Victorian 18ct gold & red garnet 5 stone ring
4.2g size L 80-120
- 537** Unmarked yellow metal coin fob & 2 unmarked
yellow metal chains, 3 tie pins, pair , pair of
pearl & yellow metal ear clips 30-50

- 538** 3 Costume jewellery to include paste floral spray brooch & white metal marcasite brooch 10-20
- 539** 9ct Ladies cocktail watch 12.2g 60-80
- 540** Vintage 18ct gentleman's wrist watch by Bucherer, on a brown leather strap 100-200
- 541** Collection of pre decimal coins to include sixpences, farthings & florins, & 3 commemorative silver jubilee coins 120-150
- 542** Qty of silver plated cutlery 20-40
- 543** 2 Victorian 9ct bar brooch 4.6g 40-60
- 544** Collection of white metal & sterling silver brooches & shell cameo in yellow metal 40-60
- 545** Collection of costume jewellery 20-40
- 546** Yellow metal (hallmark worn) emerald & pearl ring in open work setting with heart gallery 2.6g 50-80
- 547** Notebook, silver mounted shoe horn, miniature wallet, magnifying glass, small religious cased crucifix & corkscrew 30-50
- 548** Collection of hallmarked silver jewellery 80-120
- 549** 9ct gold pendant, tie pin & 3 stone diamond ring 100-150
- 550** Large pair of modern design oval silver sauceboats with moulded handles on a thumb moulded cast foot 23cm by Carrington & Co London 1960 33oz 400-600
- 551** 18ct Gold signet ring 600-800
- 552** 14ct Gold solitaire ring 250-350
- 553** Britannia standard silver covered bowl in George I style by Messers Jays Chester 1904 8.5 oz 150-250
- 554** Pink tormaline & diamond pendant in fitted swartski case 3000-4000
- 555** C18th Irish silver hook end soup ladle with shell fluted bowl chased foliage crested cartouche terminal maker MS circa 1780 36cm 7oz 150-250
- 556** Copy of a West country early C17th style seal top spoon by Bruford & Co Exeter London 1929 30-50
- 557** 18ct Gold aquamarine ring 500-600
- 558** Silver cuff bangle 80-100
- 559** Edwardian double carving set with steel blades & silver ferrules to the horn handles by Joseph Rodgers & Co, cased 50-100
- 560** Tanzenite bracelet set in white gold 400-500

- 561** Diamond & sapphire 3 stone ring 18ct white gold 1500-2000



- 562** 3 full eternity rings 1 emerald, ruby & sapphire set in white gold 2000-3000

- 563** Cartier triple ring in 3 colour gold 800-1000



- 564** Multi gem set necklace & bracelet in 18ct gold 900-1000

- 565** Cased early 9ct gold brooch in the form of a horse 12.1g 280-350



- 566** Mixed house clearance lot of a variety of gold, jewellery, cufflinks, costume jewellery, studs, pocket watch, stock pins etc

- 567** Victorian electroplated beer jug with athletic presentation for 1874 gilded inside by Martin Hall & Co 18cm 50-100



- 568** 9ct cased stick pin set with an oval opal cabochon
- 569** Early Victorian silver childs mug embossed with flowers, scrolling handle on a conforming foot makers Reilley & Storer London 1837 5oz 100-200
- 570** 9ct Gold brooch in the form of a swallow Birmingham 1989 5.8g 100-200
- 571** Quantity of silver and plated items
- 572** Scottish silver sparrow beak jug by Hamilton & Inches Edinburgh 1932 5oz 80-120
- 573** 18ct Gold single stone approx 2ct diamond ring, central oval old cut diamond in a 6 claw open work setting size O 1/2 4.33g 3000-5000



- 574** Large Edwardian silver roasting fork with wooden handle, silver mounts by Elkington & Co Birmingham 1910 82cm
- 575** Silver bullet teapot in George I style with a moulded swan neck spout engraved monogrammed cartouche in contemporary style, scroll handle on a moulded foot by Crichton Brothers London 1927 15oz 200-300
- 576** Mid C18th style silver rectangular ink stand engraved baron's crest with 3 ink & pounce pots with glass liners & pierced covers, the reentrant corners to panel feet 27.5cm by Crichton Brothers London 1936 38oz 500-700
- 577** Cased set of 12 fish knives & forks, Hanavarian rat tail pattern by George Howson Sheffield 1927 34oz cased
- 578** Silver tumbler cup by CJ Vander Ltd London 1968 5.8oz
- 579** George I Britannia standard pint tankard, the capped scrolled handle with initials, on moulded foot By Matthew Lofthouse London 1723 12oz
- 580** Set of late Victorian hand forged silver cutlery in Louis XVI variant pattern, the crest of Uniacke of county cork Ireland, comprising a servicing spoon, 4 tablespoons, 8 table forks, 8 dessert spoons, 8 dessert forks, pair of sauce ladles, 10 teaspoons & 4 egg spoons by George Hawson Sheffield 1896 80oz 800-1000

- 581** Set of 6 silver handled cheese knives by William Turner, millennium mark 2000
- 582** George III silver cream pail, wirework sides applied foliage, rope twist foliage swing handle & blue glass liner, apparently unmarked circa 1770
- 583** George IV silver Kings pattern silver soup ladle crested by R Twycross Dublin 1827 11.5oz 150-250
- 584** Victorian paperweight of a silver cast Jack Russell modelled & mounted on a figured grey marble rectangular base 12.5 cm London 1884 200-400
- 587** Late C18th Irish silver loving cup with engraved swag decoration, 2 scroll handles on a banded foot 18cm by Matthew West Dublin 1792 15oz 200-300
- 588** George III silver baluster wine jug, gadroon borders & scroll wood handle 30cm by Thomas Daniel London 1770 28oz 500-700
- 595** Pair of cast Britannia standard silver candlesticks in William III style, baluster turned stems & welled square moulded bases 17cm by Spink & Son London 1960 28oz 400-600



- 597** Oil on canvas H Diemst 'River Scene'
- 598** Silver pint baluster tankard with capped scroll handle on a moulded foot by Messers Jay Chester 1930 11oz 150-250

Pictures

- 599** Early C20th school portrait of 'A Lady in Black Choker' pastel 40 x 36cm in moulded silver coloured frame 40-60
- 600** After Snaffles, "oh to be in England." Unframed signed in pencil on mount 80-120
- 601** D Thomas crayons "Town House" & watercolour of "Castle ruins & farm yard"
- 602** After A Wardle colour print 'Otterhounds' framed & glazed & C20th oil on canvas St Bernard dog 46 X 36cm in oak frame 10-30
- 603** Atributed to C Vawser oval watercolour lakeside view with church 12 X 14cm framed & glazed & 2 small Oriental watercolours 30-50
- 604** Set of 4 colour prints "Flowers" & 3 others
- 605** Framed and glazed print, Portrait of a Lady, 66 x 50cm 100-200
- 606** C20th colour print "Continental mountain scene in winter" 51 x 77cm gilt frame & coloured print after Morland 'Summer Amusement' 5-10
- 607** MAUNETS early C20th, Impressionist oil on board, "Stormy coastal scene with Windmill" light decorative frame, signed indistinctly lower right 39x29cm
- 608** PAULINE JONES C20th British 5 pictures 10-30
- 609** Painting of 'The Mountain' by H Maclaren 100-150
- 610** Painting of the girl with sheep
- 611** Oil painting of the girl in the garden
- 612** Print of huntsman jumping
- 613** Lionel Edwards Tetrarch by Roi Herode Vahren
- 614** Picture Charge of the light brigade
- 615** 1985 Paris oil painting
- 616** Robert Hills OWS (1769-1844) - Study of a standing pony, pencil, with inscriptions and with Covent Garden Gallery Ltd label verso, 10 x 14cm 50-80
- 617** Drawing of a Fox (1854) 40-60
- 618** Qty of pictures (9)
- 619** 2 framed black & white photographs 31 x 41 cm 10-20
- 620** Signed print 'Seconds to Spare' signed by David Lemey, Richard Thomas, Lawrence Portet & Timothy O'Brien 1843/1950 & qty of prints 30-50
- 621** After Gordon King , set of 4 colour prints of Horses & nude women 'Spring, Summer, Autumn, Winter' all signed in pencil by the artist & numbered 192/450, 50 X 40cm 30-50
- 622** W SWAN watercolour 'Derwent Water' signed lower right 35 X 25 cm 40-60
- 623** After Snaffles set of 7 colour prints of hunting & steeplechasing 14 X 20cm framed & glazed 40-60
- 624** C19th/20th Oil on canvas ' Seascape with Figures on the rocks' 22 X 46cm in gilt frame. C19th Sepia watercolour ' The Green Dragon' signed with initials, dated 1883 lower right 30 X 22cm framed & glazed & small engraving after Hogarth ' Buttons Coffee House' about the year 1730 14 X 18cm framed & glazed 40-60
- 625** After F Paton black & white print 'Not at Home' framed & glazed 11 X 16cm, after B Nightingale pair of black & white prints 16 X 21cm, A Sparrow pencil drawing Terrier signed lower right 27 X 22cm framed & glazed, 2 hunting prints framed & glazed & after G Carris limited edition print 'The Wild Bunch' 29 X 43cm framed & glazed 40-60
- 626** Modern oil of ' The Angel at Purton' & a winter water colour & a miniature of the same pub by Robert Hughes 20-30
- 627** Robert Aswan oil on canvas laid down on board ' Recumbent Cheetah' signed lower right 29 X 38cm framed 25-40
- 628** Cyril Osborne modern oil on artist board 'Dwyfor River Wales' 49 X 61cm in gilt frame 20-30
- 629** After H Brittan Willis colour print ' A Country River Landscape with Cattle & Children' 51 X79cm framed 20-30
- 630** After Graham Sutherland lithograph 'The Egg' from the Uccelli Suite signed in pencil on mount 64 X 48cm 200-400
- 631** After John Leech colour print 'Gone Away' 40 X 63cm framed & glazed, After C Aldin colour prints a pair 'Pointer' 'Hare' 23 X 30cm framed & glazed & 2 further print after Aldin 80-120
- 632** After Pamela Griffith limited edition sepia print 'The Echinda' no 36/40 signed in pencil on mount 44 X 60 framed & glazed, after Elaine Haxton black & white limited edition print ' Gorilla & Young' 30 X 35 cm framed & glazed, & other pictures 50-80
- 633** ACE set of 3 watercolour caricatures of frogs 10 X 10cm framed & glazed, 8 similar prints framed as 2 & another 'Winnie The Pooh' & others 40-60

- 634** Arthur Batt oil on canvas 'A Cob Stallion' signed lower left dated (1878) 51 X 61cm in gilt frame (old repairs to canvas) 300-500



- 635** After Sarah Elder pair of coloured prints 'Fox Hounds' 32 X 43cm framed & glazed 30-50

- 636** Elder Gouache 'Hounds on their Bench' signed & dated lower right 2000 29 X 37cm framed & glazed 50-80

- 637** C19th Watercolour 'Dapple aged 31 when this picture was painted 1831' titled Abbott & Holder label verso 16 X 22cm framed & glazed 50-80

- 638** After Louis Whirter limited edition black & white etching 'Edinburgh Castle' titled & signed in pencil on mount no 44/200 X 25cm framed & glazed 40-60

- 639** After CHD pair of coloured aquatints 'French Postilions' & 'English post boys' published London 1834 by Ackermann & Co 26 The Strand 27 X 38cm framed & glazed 80-120

- 640** Pair of modern oil on canvas 'Continental Street Scenes' 40 X 51cm framed 20-30

- 641** Parnell C20th oil on board 'Panoramic Country Scene' 43 x 71cm in gilt frame & 3 other pictures 20-30

- 642** Qty of pictures & prints (11) 20-30

- 643** Wooden carved model of London omnibus 20-30

- 644** After Stubbs modern oleograph 'Juno' 40 X 51cm in gilt frame 20-30

- 645** After Cecil Aldin set of 4 colour prints 'Young Lady side saddle', 'Young Boy on cart horse' & 2 others 42 X 33 cm framed & glazed 80-150



- 646** DENIS ALDRIDGE watercolour 'Racehorse exercising' signed in pencil lower right dated 1945 22 X 29 framed & glazed 80-120



- 647** After Henry Wilkinson limited edition colour etching 'Cocker Spaniels' signed in pencil on mount no 15/150 25 X 35 cm framed & glazed (some foxing) 30-50

- 648** After Snaffles colour print 'Once Upon A Time' signed in pencil on mount 35 X 49 cm framed & glazed 100-150

- 649** After Snaffles colour print 'The Timber Merchant' artist printed remarque signed in pencil on mount & snaffles blind stamp 23 X 30cm framed & glazed 120-200

- 650** After Snaffles 'The Season' 1939-40 artist printed remarque signed in pencil & snaffles blind stamp 29 X 49cm framed & glazed 250-350



- 651** E FRATTINI Early c20th oil on canvas 'man smoking pipe' 22 X 19 cm framed & 3 books to include 'Publii Virgilii Maronis' 'Opera 1767 30-50

- 652** ALFRED MAILE (fl 1871-1889) watercolour 'The Old Shambles York' signed lower left 42 x 32cm framed & glazed in gilt frame 150-250

- 653** After H Neilson colour print 'Mr Fox's Hunt Breakfast On Xmas Day' & 3 other prints framed & glazed 20-30

- 654** After Carlo Khan C18th colour aquatint 'Wife & no Wife or a Trip to the Continent' 35 x 46 cm & after J.g. colour aquatint 'Fatigues of The Campaign in Flanders' 35 x 50cm framed & glazed 50-80

655 After Joan Wanklyn colour print 'Kings Troop Royal Artillery' artist printed remarques signed in pencil on mount 44 X 61 cm & after Tony Matthews pair of black & white prints 'Buckingham Palace March 1970'. watercolour collage after Stubbs & colour print after Hayward Hardy 25-40

656 C18th Continental oil on canvas 'Portrait Of A Woman Half Length' Indistinctly signed lower left 75 X 64cm. Relined & re stretched in gilt frame 300-500

657 After Roz Goody colour print ' The Belvoir Bartestree Wood' signed in pencil 295/580 on mount & BB watercolor 'Labradores Head' signed with initials within image dated 87 20 X 15 cm framed & glazed 20-30

658 J LOWER C20th pair of oil paintings 'HMS Queen Elizabeth Down the Channel to Torbay' & 'Shipping Scene outside a Harbour' signed lower left & right dated 1920 in gilt frame 41 X 61cm 150-250

659 Alfred Dunn (1937) screenprint 'From the Series A Line' 56 X 77 cm & 6 others similar 150-250

660 Alfred Dunn (1937) screenprint ' From the Series A Line' & 5 others 120-220



661 Oak framed oil painting study of a white bull in a landscape 31 x 41 cm 50-80



662 Oil painting portrait of 2 girls at the seaside beach paddling 24 X 19cm 50-80

663 Oil on board a tranquil fishing village with fishing boats in foreground 26 X 34.5cm 50-80



664 Ebonized framed oil painting study of a lurcher dog 33 X 28cm 50-80



665 Signed oil painting impressionist painting of a matador & bull 38 X 50.5cm 30-60

666 Gilt framed oval oil painting of a floral display in a vase 47.5 X 38cm 30-60

667 V Hamer early C20th pastel portrait of a seated nude female 58 X 40.5cm 20-40

668 Large selection of unframed artworks to include oils on canvas, antique engravings, watercolours etc 30-60

669 Oriental school 2 framed Japanese wood blocks depicting figure studies, different sizes 20-40

670 Oil on board, head & shoulder portrait of an Anglo Indian girl 23 X 20cm 50-90

671 Signed oil painting impressionist scene Paris view with figures & Arc De Triomphe 38 X 50cm 50-80

672 Mark Twain framed oil painting portrait of the renowned American author of Tom Sawyer & Huckleberry Finn 24 X 18.5cm 50-80

Furniture

- 681** Good quality mahogany Edwardian double wardrobe with fitted interior 120w X 180h cm
150-250

- 682** 4 French C19th metal folding garden chairs
50-80



- 686** Occasional tables & side table (all in need of restoration)
40-80

- 687** Carved oak octagonal tripod pedestal table
60-120

- 688** Large green upholstered armchair & walnut open show framed chair with green upholstery
40-80

- 689** Pair of Edwardian needle point seated bedroom chairs & other chairs
60-120

- 690** 4 Oak chairs, & decorative occasional table with roses decoration to top, 2 plant stands
50-100

- 691** Small nursing chair upholstered in blue & white Toile fabric
40-60

- 692** Victorian upholstered serpentine seat button backed day bed
150-200



- 693** Small chest of 4 long drawers 66w cm 80-150

- 694** Queen Anne style black Japanned double domed bureau cabinet
300-500



- 695** Ladies small reproduction mahogany bureau
102 h x 67 w cm
30-50

- 696** Modern pine kitchen table 152 l X 66 w cm
30-50

- 697** C19th Dark oak 2 drawer dresser, missing handle 128l cm
100-200

- 698** Queen anne style cross branded walnut knee hole writing desk 67 X 82 cm
300-500



- 699** George III inlaid mahogany straight front chest of 5 drawers 98 w X 107h cm
300-400

- 700** Bow front chest 2 short & 2 long drawers
102cm W
50-100

- 701** Mahogany fold over table on central circular column to large pad feet 97Wx47Dx75H cm
20-50

- 703** Cream upholstered day bed 88Wx158L cm
5-10

- 704** Oak rocking floor crib
50-100

- 705** Mahogany and satinwood inlaid serving table with central hidden drawer, flanked by 2 drawers with brass handles, 153cmL x 87cmH
200-400

- 706** Contemporary bergere arm chair
30-60

- 707** 3 pine shelving units, 171cmH; 100cmH; 91cmH
50-100

- 708** Light oak drop leaf table
5-10

- 709** Dresser top
5-10

- 710** White painted dressing table with 6 drawers and bevelled glass swing mirror, 113cmW
50-80
- 711** Hostess trolley, & a small oak glazed bureau bookcase
20-60
- 712** Large maple wood 3 door linen press, with central mirrored door, with fitted slides and drawers, 208W x 180cmH ; makers number stamped to one drawer
60-150
- 713** Mahogany two tier sidetable with two drawers to front and glass top
80-150
- 714** Oak framed armchair, with bergere back and seat, opening to reveal a white china commode with lid, and another small bergere side chair
40-80
- 715** Quantity of various Antique chairs
30-60
- 716** Edwardian mahogany side table with rising lid and central door, above square legs, 68 x 51cm
80-150
- 717** A large glass dining table with wrought iron base, 213cmL; & a smaller, similar coffee table
75-200
- 718** Oak bureau bookcase , the upper half glazed with Art Nouveau style lead inserts, & oak beading to drawers & surround 225 X 85cm
30-60
- 719** Very large & heavily carved contemporary Italian style wall unit, with 5 carved cupboards below a pair of 3 glazed gothic arched doors 288Wx54Dx230H cm
- 720** Edwardian Mahogany drop leaf dining table seats 8
- 721** C19th West African carved chair with hide seat
60-100
- 722** Victorian bar stool
- 723** Oak square cafe/bistro table with pedestal base 61 cm square
10-20
- 724** Oak square cafe/bistro table with pedestal base 61 cm square
10-20
- 725** 1940's Pine table
- 726** 2 Garden chairs
- 727** Elm 5 bar gate 5 foot
- 728** Oak 4 foot hand gate
- 729** Solid oak kitchen top
- 730** New Pine door
- 731** Chest of drawers



- 732** C17th oak gate leg table
- 733** Satinwood Pembroke table 73cm 2000-3000
- 734** 2 X 3 panel (signed by Helen O'Keefe) etched glass above floral motif screens. Each panel 38 X 195cm
50-80
- 735** Wood framed winged arm chair, Mahogany demi lune table (108x56cm) & 2 mahogany Pembroke tables
20-40
- 736** Mahogany flower stand (108cm), small quality round table with barley twist leg (50dia x 74h cm) & 2 other circular tables 84 & 63 cm dia
30-50
- 737** C1780/85, 30 hour long case with painted dial by John Smith of Wrexham, with a fully restored dial and oak & fruitwood case. Good working order
200-300
- 738** Decorative dining table with grey painted base & scrolling legs, the top with a scumbled lattice work effect with 2 extending leaves 160 long closed, 202 cm extended 104cm w
300-500



- 739** Set of 8 (6 + 2) dining chairs with newly upholstered seats, stamp to chair 'designed & executed by Bartholomew & Fletcher London W1'
200-400



- 740** Pair of decorative duck egg blue painted bedside tables with marble & brass galleried top 82h X 35w cm
50-100



- 741** Large pair of wooden framed armchairs upholstered in burnt orange fabric 200-400



- 742** Large oak square framed armchair upholstered in blue & oatmeal striped fabric & oak framed arm chair with rush seat 30-50
- 743** 3 Bar stools painted grey & upholstered in blue fabric 40-80
- 744** Contemporary writing desk with rising lid opening to reveal desk & fitted interior 43 X 74w cm 50-100
- 745** Mahogany pedestal writing desk flanked by 6 side drawers & 3 central drawers, with green tooled top 124w X 60d cm 80-120
- 746** Grey & cream painted decorative knee hole desk/dressing table with mirror over 110w cm 100-200



- 747** Contemporary narrow glazed bookcase 40 X 35 x 188h cm, & small corner cupboard with shelves 173h cm 50-100
- 748** Decorative coffee table upholstered in a designer fabric 105 X 75cm & another grey painted upholstered footstool 150-250



- 749** Small pine chest of 3 drawers 82h X 92w 50-100
- 750** Painted dressing table with mirror over (in need of restoration) 20-50

- 751** Narrow chest of 6 long drawers 135h X 91w cm 80-150
- 752** Oak coffee table with heavily carved scrolling legs to base 132l 42h cm (some restoration needed)
- 753** Howard style armchair upholstered in pink & grey fabric (worn) 150-250
- 754** Mahogany framed child's chair upholstered with tapestry insert (altered & in need of restoration) 30-60
- 755** Mahogany regency sofa table with 2 drawers 134l cm
- 756** Victorian mahogany Pembroke table 82w cm 80-120
- 757** Georgian 5 drawer knee hole desk 95w cm 60-120
- 758** Victorian rosewood piano stool 50-100
- 759** Victorian mahogany swing mirror with rising lid 88h X 78w cm 60-120
- 760** Victorian show framed chair upholstered in yellow striped fabric 50-100
- 761** Victorian rosewood 4 dining chairs upholstered in red striped fabric 40-80
- 762** Victorian 6 walnut chairs 50-100
- 763** Victorian rosewood high backed chair newly upholstered in cream & grey striped fabric 50-100
- 764** Mahogany chest of 2 short & 3 long drawers 90X 90cm 100-200



- 765** Edwardian chest of 2 long & 2 short drawers 107w X 147h cm 50-100
- 766** Nest of 4 tables 72h cm 40-80
- 767** Victorian burr walnut card table on reeded legs 86w cm 60-120
- 768** Gents satinwood inlaid dressing table mirror 66w cm 80-150
- 769** 2 1960s Pine side tables 20-40
- 770** Iron garden gate 20-40
- 771** Contemporary large circular grey chair and footstool, 80-150
- 772** 3 Mahogany & burr walnut dressing table mirrors 100-200
- 773** Oak bobbin turned stool with Bergere seat & qty of occasional tables & stools 40-80

- 774** Large bench with heavy carved scrolling back and arms above 3 drawers to base, slatted seat with upholstered neutral cushion, 187L x 94cmH 150-250
- 775** Foot stool 20-40
- 776** Green baize card table with folding legs 20-30
- 777** Mahogany drawer wash stand 30-50
- 778** White painted garden table & chairs 50-80
- 779** Vintage wooden deck chairs & terracotta pots 40-60
- 780** Bathroom cabinet and a tapestry 50-100
- 781** White metal garden table & chairs



- 782** C18th Irish mirror, mahogany fret frame with a gilt hoho bird, sides with carved gilt wood trailing foliage 80 X 46cm

Rugs

- 784** Persian rug with red central ground, beige border, all over floral motifs by Safarieh Mahal 2.31 X 1.54m 20-30
- 785** Beige coloured runner, 118 X 83cm
- 786** Moroccan style Berber rugs, 154 X 223cm
- 787** Moroccan style Berber rug, 73 X 62cm
- 788** Moroccan style Berber rug, 134 X 80cm
- 789** Striking contemporary Arts & Crafts carpet 2.95 X 2.52m 2000-3000
- 790** Large hand woven European Needlepoint carpet 5.75 X 4.30m 1500-2000
- 791** Antique Caucasian Karabagh kilim 3.70 X 2.50m 700-1000



- 792** Fine Caucasian kilim 3.40 X 2.00m 500-800
- 793** Fine Persian Tabriz carpet C1930 3.30 X 2.00m 800-1000

- 794** Antique square shape Ersari rug c1900 2.52 X 2.48m 500-800



- 795** Fine Anatolian carpet 2.92 X 2.00m 800-1000
- 796** Persian Heriz runner 5.30 X 0.94m 500-800
- 797** Antique Anatolian Oushak runner 4.35 X 0.98m 500-800
- 798** Persian Seraband long runner C1930 5.30 X 0.93m 600-900
- 799** Finely hand woven Aubusson carpet 3.69 X 2.68m 2000-3000
- 800** Finely hand woven Aubusson carpet 3.00 X 2.5m 1500-2000
- 801** Rug, with cream central panel, and red and blue geometric borders, 92 x 160cm 50-80
- 802** Antique Afghan carpet circa 1900 4.10 X 2.93m 1000-1500
- 803** Large European carpet circa 1920 5.27 X 3.21m 2000-2500
- 804** Antique Senneh Persian rug circa C19th 1.86 X 1.3m 300-400
- 805** Vintage Moroccan rug circa 1930s 1.50 X 0.96m 300-400
- 806** Antique Samarkand carpet East Turkestan circa 1900 2.82 X 2.48m 500-600
- 807** Antique Ersari carpet Central Asia circa 1890 4.26 X 2.6m 400-500
- 808** Large hand woven needlepoint of Aubusson design 5.94 X 4.04m 1200-1300
- 809** Contemporary kilim 2.9 X 1.92m 600-700
- 810** Anatolian carpet of Moroccan design 3.02 X 2.42m 800-900
- 811** Fine Qum Persian carpet circa 1930 3.33 X 2.24m 1200-1500
- 812** Finely handwoven contemporary carpet 3.18 X 2.06m 600-700
- 813** Finely handwoven needlepoint carpet 3.36 X 2.46m 900-1000
- 814** Finely hand woven needlepoint carpet 2.84 X 1.84m 700-800
- 815** Contemporary Modernist carpet 2.38 X 1.71m 300-400
- 816** Antique Samarkand carpet East Turkestan circa 1900 3.40 X 1.81m 500-600

End of Sale

TERMS AND CONDITIONS

1. Purchasers must bid by number and register before bidding. Persons unknown must provide identification either driving licence or passport, together with a copy of current utility bill. Bidders must inform the Auctioneers if they are bidding for a third party.

2. A BUYERS PREMIUM OF 20% plus vat will be charged on the hammer price (24%).

3. All persons attending the sale do so at their own risk and neither the Auctioneers, nor the vendors shall be responsible for any loss, accident, and injury to persons or property, howsoever caused.

4. In as much as the Auctioneers act as agents for a disclosed principal they shall not be considered personally responsible for any default on the part of the Purchaser or Vendor and the remedy shall be against them only and not against the Auctioneers.

5. PAYMENT becomes due on the fall of the hammer. The following methods of payment will facilitate the immediate release of purchases:

- a. BANK TRANSFER: BACS inter bank transfer is our preferred method of payment.
Lloyds Bank TSB, Old Town Swindon, Wiltshire
Sort Code: 30 98 41 Account No. 04910916
IBAN No. GB 09 LOYD 3098 4104 8871 32
BIC LOYDGB21106
Purchasers will be responsible for all bank charges for international payments, and are required to use their registered bidding name in the bank reference.
- b. DEBIT CARD: IN PERSON only (not on the phone)
- c. CASH: Following the introduction of new regulations in June 2017, we are required to conduct identification checks where customers wish to pay in cash for purchases of 10,000 Euros or more. Please telephone the office for more details or see our website.

We cannot now accept payment by Cheque or Credit card.

LATE PAYMENT CHARGES – A £20 HANDLING FEE WILL BE ADDED TO ALL INVOICES, IF PAYMENT HAS NOT BEEN RECEIVED WITHIN 5 WORKING DAYS OF THE SALE.

6. Buyers shall at their own risk and expense take away any lots that they have purchased and paid for not later than 2 working days following the day of the auction, after which they shall be responsible for any removal, storage and insurance charges.

7. No items will be removed without an Auctioneers receipt which will be checked on exit. Please make arrangements with the Auctioneers if you cannot collect goods purchased prior to 5pm on the Friday following the sale. Goods remaining on the premises are entirely at the risk of the purchaser, **and if not collected within 5 WORKING DAYS will be subject to a storage charge.** We offer by consultation free storage for 1 week, then items are moved to a warehouse and storage is £10 per day. 3 months maximum. Goods will then be given to charity.

8. Whilst goods are the responsibility of the purchaser on the fall of the hammer, title does not pass and is reserved by the vendor until the auctioneers have received payment either in cash or cleared funds.

9. DESCRIPTIONS & CONDITION.

Kidson-Trigg Condition Reports are carried out by Kidson-Trigg Staff, **who are not trained conservators, nor restorers, and will only examine items from their naked eye.** Buyers are advised to seek independent expert advice. Condition Reports with Estimates of £100+ will be given priority, and due to the volume of requests each sale, we cannot guarantee that we can answer all requests. Whilst we seek to describe lots accurately, it may be impractical for us to carry out exhaustive due diligence on each lot. Prospective buyers are given ample opportunities to view and inspect before any sale and they (and any independent experts on their behalf) must satisfy themselves as to the accuracy of any description applied to a lot. Prospective buyers also bid on the understanding that, inevitably, representations or statements by us as to authorship, genuineness, origin, date, age, provenance, condition or estimated selling price involve matters of opinion. We undertake that any such opinion shall be honestly and reasonably held and accept liability for opinions given negligently or fraudulently, subject to the foregoing **neither we the auctioneer nor our employees or agents not the seller accept liability for the correctness of such opinions** and all conditions

and warranties, whether relating to description, condition or quality of lots, express, implied or statutory, are hereby excluded.

10. Purchasers are deemed to have satisfied themselves by inspection prior to the sale as to the quality, condition and description of each lot which is sold with all faults and imperfections as seen. Purchasers should be aware that the Auctioneers do not normally state any damage or restoration because such implies that all other items are perfect. Notwithstanding this condition, if a Purchaser claims any items to be a deliberate forgery or other such reason, any claim must be made within 5 days of the Sale, after which time the Auctioneers will not entertain any claim. Any claim must be submitted together with 2 letters from recognised independent experts.

11. The bidding is to be regulated by the Auctioneer, the highest bidder shall be the purchaser. If any dispute should arise between two or more bidders, the lot in dispute will be immediately put up again and resold. The Auctioneer will settle any dispute, of whatever nature either during or after the sale, whose decision will be final and binding upon all parties.

12. Where items are subject to a reserve price, the auctioneer reserves the right to bid on behalf of the vendor up to the reserve price and in such cases the vendor may not also bid.

13. REMEDIES FOR NON PAYMENT or failure to collect purchases If any lot is not paid for in full and taken away in accordance with these Conditions, or if there is any other breach of these Conditions, Kidson-Trigg as an agent for the seller shall at its absolute discretion and without prejudice to any other rights it may have, be entitled to exercise all of any of the following rights and remedies:

to proceed against the buyer for damages for breach of contract;
to rescind the sale of that lot and/or any other lots sold by Kidson-Trigg to the defaulting buyer;

to re sell the lot (by auction or private treaty) in which case the defaulting buyer shall be responsible for any resulting deficiency in the total amount due (after crediting any part payment and adding any resale costs). Any surplus so arising shall belong to the seller;

to remove, store and insure the lot at the expense of the defaulting buyer and, in the case of storage, either at Kidson-Trigg premises or elsewhere;
to charge interest at a rate not exceeding 1.5% per month on the total amount due to the extent it remains unpaid for more than 2 working days after the sale;

to retain that or any other lot sold to the defaulting buyer until that buyer pays the total amount due;

- to reject or ignore bids from the defaulting buyer at future auctions or to impose conditions before any such bids shall be accepted;
- to apply any proceeds of sale of other lots due or in future becoming due to the defaulting buyer towards the settlement of the total amount due and to exercise a lien on any of the buyer's property in Kidson-Trigg possession for any purposes.

14. RELEASE OF GOODS.

Goods will not be released until full cleared payment has been received. Goods will only be handed over on sight of a paid invoice. If a paid invoice is not produced, written authority from the purchaser and conformation of all funds cleared for payment of the accounts, will be required before release. When goods are collected by a non recognised courier, photo identification will be required a copy of which will be taken along with a note of the registration of the vehicle used. Saleroom porters are available on sale day and the day after to assist purchasers with the removal of goods up to a maximum of 25 kilos in weight.

15. The entire sale is conducted under the auctioneers margin scheme where VAT on the buyers premium is not reclaimable.

16. Online Bidding.

Kidson-Trigg Auctions offer an online bidding service via www.easyliveauction.com & www.the-saleroom.com for bidders who cannot attend the sale.

Please note that any lots purchased via easylive.com will be subject to 3% + VAT or £3 flat fee per auction.

Please note that any lots purchased via the-saleroom.com live auction service will be subject to an additional 4.95% commission charge + VAT at the rate imposed on the hammer price.

PROPERTY FOR SALE & SOLD



WROUGHTON FOR SALE

A prime 1.18acre site with detailed planning permission for the construction of 13 new dwellings



**BISHOPSTONE
FOR SALE**



**WANBOROUGH
FOR SALE**



**SEVENHAMPTON
FOR SALE**



**BAYDON
SOLD**



**BOURTON
SOLD**



**BISHOPSTONE
SOLD**

PROPERTY LET, TO LET & UNDER OFFER



EAST GARSTON
LET



KINGSTONE WINSLOW
LET



HANNINGTON
TO LET



ALDBOURNE
TO LET



RAMSBURY
UNDER OFFER



HINTON PARVA
UNDER OFFER



BLUNSDON
UNDER OFFER



HEDDINGTON
UNDER OFFER



WINTERBOURNE MONKTON
UNDER OFFER